



Ivinghoe Beacon Magazine

Issue 110

70 pence where sold



Inside this Issue:

- Queen Victoria's Celebrations
- Ashridge Ramblings
- Sporting Scoop

The Quarterly Magazine
of Ivinghoe Parish Council

The Beacon Team...

The Beacon Magazine would not reach your door without the kind help of the volunteer band of distributors.

Many thanks to them all; Gloria Snowdon, Les Hyde, Pat Roach, Rob and Ann Cattle, Wendy Farrington, Keith Haynes – it couldn't be done without you!

If you have any skills that will help us to keep the magazine going or you would like to submit an article, please let us know as we are always looking for new and varied talents!



Editor: Bridget Knight

Tel: 07960 605393

Email: ivinghoeaparishclerk@gmail.com

Advertising Manager: Bridget Knight

Tel: 07960 605393

Email: ivinghoeaparishclerk@gmail.com

Design and Artwork: Laila Palfrey

Tel: 01525 222214

Email: laila@breezdesign.co.uk

CONTENTS

Welcome from the Chair	3
Neighbourhood News	6-31
Ecumenical Enlightenment	32-37
Cultivation Clippings	42-47
Beyond the Boundary	50
Sporting Scoop	52-57
Councillor Communication	60-71

BEACON COPY AND ADVERT DEADLINES

We aim to get the magazine distributed around the beginning of every February, May, August and November. To ensure your article or feature makes the edition you would like please see the submission deadlines below:



November 2019 – 4 October 2019
February 2020 Edition – 3 January 2020
May 2020 Edition – 3 April 2020
August 2020 Edition – 3 July 2020

BEACON MAGAZINE ADVERTISING RATES:

1/4 page	£58 per year
1/3 page	£65 per year
1/2 page	£95 per year
Full page	£130 per year

NB: Rates are for 4 editions.

Artwork must be supplied as a jpeg or a pdf file.

Welcome from the Chair

Ivinghoe Flower and Produce Show

We are looking forward to the Ivinghoe Flower and Produce Show on Saturday 14th September being held in both the Ivinghoe Town Hall and Ivinghoe Old School Village Hub.



Karen Groom,
Chair, Ivinghoe
Parish Council



Bucks Best Kept Village Competition 2019 Results

Ivinghoe scored 84 marks in this year's Gurney Cup. Well done to all concerned. A certificate of merit will be issued in September and we will receive further feedback in due course. Aston Abbots won with 94 marks and Fulmer were runners-up with 93.

Christmas Trees

Sadly, the both the Ivinghoe Aston and Ivinghoe Christmas Trees are dying. We have taken advice and will look for alternative types of trees which suit our soil type.

Ivinghoe and Ivinghoe Aston Village Tidy-up

Thank you to the volunteers who have been helping to keep the parish looking good. In Ivinghoe **Lisa McCarthy** has taken care of the planters by Ivinghoe Lawn and these are being enjoyed by all especially the local bees. We have managed to keep last years geraniums alive and these have brightened up the Church bus stop. Ivinghoe Aston had a village tidy up earlier this year. **Thank you to everyone involved.**

Roads

The Councillors have met with the Bucks CC Local Area Technician and he has suggested some more robust bollards to be placed on the corner of the Lawn entrance. Some HGVs have been ignoring the 18-tonne weight limit and the council is working with the Thames Valley Police on this matter.

Ivinghoe Town Hall

After the former chairman moved away the committee was left without a chairman and the Library and ▶

Town Hall risked losing their very valuable charitable status.

As a temporary measure I have become Town Hall Chairman and Cllr Lott Vice Chairman, this is to enable the Town Hall to continue. If you can spare some time to join the committee please get in touch, there are four meetings a year and we have a very good committee with an excellent Secretary, Treasurer and Booking Clerk but more help is always very welcomed.

AVDC District Councillor Chris Poll

Congratulations to AVDC District Councillor Chris Poll who has been appointed AVDC Vice Chairman.



Chris has recently completed a charity sky dive for local charity Nest Aylesbury Vale. Nest provides accessible and equitable support service for families, with children under five, living in Aylesbury Vale. If you would like to help Chris reach his £1,500 fundraising target you can sponsor him through the link <https://www.gofundme.com/avdc-chairman039s-charity-skydive>.

Website

Please check the website for regular updates: www.ivinghoe.org.uk

Have you ever thought about 'growing your own'? Growing your own fruit and vegetables can be a very satisfying experience and in Ivinghoe we are very lucky to have some beautiful allotments just off Church Road, overlooking St Mary's Church.

If you are an Ivinghoe resident and would like some more information about availability of plots – we have them in a range of sizes – please contact the Parish Clerk at ivinghoeparishclerk@gmail.com

NB: there may not always be an available plot but we do keep a waiting list!



FORD END WATERMILL

Would you like to join our team of volunteers?

Ford End Watermill, on Station Road just a short distance from the centre of Ivinghoe, is a small farm mill. It has been producing flour for centuries and is maintained and operated entirely by volunteers – so volunteers really are vital. Without them, we would not be able to keep this historic local mill operational and open for visitors.

We are looking for volunteers who can:

- help maintain the mill through this Autumn, Winter and Spring in readiness for next year's openings.
- help us welcome our visitors as they arrive for one of our openings each Summer - on Sundays and Bank Holidays; and/or
- guide visitors around the mill describing how we use the power of water from our millpond to drive our waterwheel, our gears and our millstones to produce our sought-after wholemeal flour.

There are opportunities for individuals with a variety of skills. So whether your preference is to meet our visitors, to explain all about the mill to visitors or to get to grips with the mill building and its machinery – the choice is yours. We can provide you with the necessary training and we have all the relevant information about the mill – how it works, its history and how it has been restored.

We are a friendly group. All of us are committed to conserving this priceless resource for future generations. We can provide new volunteers with the satisfaction that comes from showing how the sustainable power of water can be used to produce flour for the baking of bread.

So, if you are interested, please telephone: John Wallis on 01296 661997; Chris Tugby on 01442 825421; or Stephen Booth on 01296 661745. You can also contact us by email at millman@fordendwatermill.co.uk

Stephen Booth, Chairman, Ford End Watermill Society

RikkIAbout

Message from our new neighbours

The Plymouth Brethren Christian Church congregation members of the new Ivinghoe Aston meeting hall live in the surrounding area, and we are very pleased to have found this excellent location in the friendly Ivinghoe Aston community. The hall will be used for Christian Bible readings, prayer meetings and gospel preachings. Whilst we don't lend out our meeting hall for other uses, we are affiliated with the Rapid Relief Team organisation, and look forward to showing our support for the local community going forwards. You can find more information about us on the following websites:

<http://www.plymouthbrethrenchristianchurch.org/>
<https://www.theplymouthbrethren.org/>
<https://togetherwearebrethren.com.au/>
<https://www.rapidreliefteam.org/>

Thump

Another massive lorry has just driven over the pothole outside our shaking house. We need a weight limit on this road now that the B488 has one and satnavs seem to think that we are the alternative.

Street map

If anybody would like a slightly-improved electronic copy of the street layout from the last issue, please drop me an email.

Countdown

My arm was gently twisted (= a few pints were gently poured down my neck) by Ketts back in 2015 to take over from him the task on ensuring that IA gets its fair representation in the mag. Everybody's style of reporting and writing is different and I think it's good to have regular changes. You can see where I'm heading. In May 2020 I'll have done five years (20 pieces) and I'd like to hand over. I see the magazine as a useful repository for facts about the village, its events and its people that might otherwise get lost in the mists of time, as a sounding board for ideas, but not so much as a vehicle for communication on immediate issues, which can usually be better dealt with these days by electronic means. So, if you fancy a go, get in touch. Please surprise me, as I probably did Ketts – and I'll happily pour a few pints down your neck – or invite you round for a cuppa and some nice bikkies if that's more your thing.

Rikki Harrington

Brampton, Ivinghoe Aston **01525 220625**;
harrington.rikki@gmail.com.

Please get in touch if you have any news, views or ideas!

Rikki Harrington



BUCKS COUNTY SHOW

THURSDAY 29th AUGUST 2019

Bolddog Lings Freestyle Motorcycle Display

Band

Over 200 Trade Stands & lots of family fun

WEEDON PARK, AYLESBURY

A413, 3 miles North of Aylesbury

8am – 6pm

ADMISSION:

	<u>ADULTS</u>	<u>CHILD</u> (5 – 16 yrs)	<u>OVER 65</u>	<u>GROUP</u> (2 adults & 2 children)
ADVANCE	£15	£5	£13	£35
SHOW DAY	£17	£6	£15	£40

*** UNDER 5's FREE ***

FREE BUS SERVICE

from Station Way, Aylesbury to Showground - First Bus 9.30am

**** FREE CAR PARKING ****

Pre Show Tickets available Online

buckscountyshow.co.uk



Tring Market Auctions

Independent Fine Art & Chattel Auctioneers and Valuers. Est 1832

**Auctioneers & Valuers of Fine Art,
Antique Furniture & Collectables**

Fortnightly General Sales of General Furnishings & Effects

Antique Furniture & Fine Art Sales

Total & Part House Clearance Specialists

If you can't find it here you won't find it anywhere!

Buying or Selling, contact us on 01442 826446

The Market Premises, Brook Street, Tring, Herts HP23 5EF

Website: www.tringmarketauctions.co.uk

Email: sales@tringmarketauctions.co.uk



Enjoy Home cooked food at the

Waterside Café

**Pitstone Wharf, Cheddington Road, Pitstone,
Bucks LU7 9AD**

Breakfasts, Lunches, Soup, Sandwiches, Toasties
Homemade Cakes, Cream Teas plus a selection of
Hot & Cold Drinks

OPENING TIMES

FRIDAY SATURDAY AND SUNDAY - 10am to 3pm

BANK HOLIDAYS 10am to 3pm

On request for group bookings we can offer seating for 36people.

Email: café@pitstonewharf.co.uk www.pitstonewharf.co.uk

WINDMILL PHARMACY

Free Prescription Collection

Free Medication Reviews

Veterinary Medicines

Lovely Gift Sets



*Patients welcome from all
surrounding areas including:*

**Minghoe
Pitstone
Cheddington
Slapton
Marsworth**

Opening Hours:

**Mon - Fri
8:30am to 6:00pm
Closed 1-2pm**



**19 - 21 High Street
Ivinghoe
LU7 9EP**

Tel: 01296 706280

PITSTONE VILLAGE HEALTH CENTRE

YARDLEY AVENUE, PITSTONE, LEIGHTON BUZZARD, BEDS, LU7 9BE

01525 223211

www.pitstonesurgery.co.uk

**DR J R BELL, DR HEATHER WHITE, DR STEPHANIE JOHNSTON, DR KIRSTEN RIEMER,
DR CHARLOTTE FISHER, DR LEE MITCHELL, & DR SHIV KORJA**

We welcome patients from Marsworth & Cheddington as well as the 'Ivinghoses' and Pitstone
including Castlemead estate.

We also offer a medication dispensing service to our patients who live in Cheddington and
surrounding villages.

We are a dispensing practice offering a full range of health services at our surgery including Family
planning, Midwifery, In-house blood tests, Travel and Minor surgery, Weekly visiting hearing aid
service and ear wax microsuction.

WI News...

Ivinghoe & Pitstone Women's Institute



The year carries on apace... Since our last report we have had a talk from Cindy White on how to make the most of supermarket flowers. This was very useful, and we have used the knowledge to make table decorations.

May saw our 102nd birthday celebration and resolutions to go to the National WI Annual Meeting at Bournemouth. Tenor, Jacob Cole, entertained us and he was magic. Ladies were also invited from neighboring institutes and they were very impressed with Jacob and the posh afternoon tea served to them.

In June we had Lorraine Law and Ann Meader who started off making jams and chutneys from ingredients from their gardens. They have now progressed to three allotments and all proceeds from their efforts go to local church funds. They make approximately £16,000 each year, well done to these ladies.

July, we all enjoyed a summer picnic.

Ladies from Ivinghoe and Pitstone represented your local WI at both the County and National meetings.

About 30 of our ladies went on a trip to Highgrove and have been enthusing ever since. Unfortunately, they did not get to meet Charles and Camilla but still enjoyed their lovely garden.

Other educational trips include going underground with the Post Office on their little postal train in London as

well as a highly enjoyable fused glass course. What's this you ask, well for all you people that have glass ornaments hanging in your windows, you now know. We all have glass birds in ours made by ourselves.

Also coming up....

August – a mystery tour

September – Feel Good From the Outside In by Nikki Hall

October – Supershoes by Sarah

November – Our Annual General Meeting

We are winners... with our float, entitled Be Fantastic Get Drastic With Plastic in the parade for the Ivinghoe Church Fete. Well done to all the other competition entrants. Our ladies were dressed as mermaids and were festooned with plastic. We really enjoyed the preparations as we felt like 5-year olds. We were also selling our delicious home-made cakes at the fete towards church funds.

Talking of homemade cakes, we progressed to home-made scones for Prosecco Cream Teas at the Music on The Green event. A lovely day of music and cream teas.

Visitors and Guests are always welcome.

Further details are available from Sue Eyre **01296 709281 / 07742 138955**



EDLESBOROUGH SURGERY & PITSTONE VILLAGE HEALTH CENTRE, 2019 FLU CAMPAIGN

EDLESBOROUGH	PITSTONE
THURSDAY 19 th SEPT 12.30 – 2pm Surnames A – M 18 years and over only	WEDNESDAY 25 th SEPT 12.30 – 2pm Surnames A – M 18 years and over only
SATURDAY 28 th SEPT 9am – 12.30 Surnames A – M 18 years and over only	
THURSDAY 3 rd OCT 12.30 – 2pm N – Z	WEDNESDAY 9 th OCT 12.30 – 2PM Surnames N – Z
SATURDAY 12 th OCT 9am – 12.30 Surnames N – Z All children also welcome	SATURDAY 26 th OCT 9am – 12.30 All children also welcome

PLEASE NOTE DUE TO SUPPLY RELEASE DATES, NO CHILDREN'S FLU VACCINE (FOR 17 YRS & YOUNGER) WILL BE AVAILABLE UNTIL OCTOBER. PLEASE WATCH FOR UPDATES ON OUR WEBSITE OR FACEBOOK PAGE

Don't forget, when you receive your flu vaccine at your GP surgery, we will also check if you have any other vaccines and checks due.



Patients eligible for Flu vaccine are those who suffer from:

All patients with DOB before 31/3/55

Heart, Respiratory, Liver
& Neurological Diseases & Diabetes
Lowered immunity.

Carers (in receipt of carer's allowance)

All pregnant ladies

All children aged 2 & 3 years at GP surgery

Children, in eligible school years, will be vaccinated at school

All housebound patients will be contacted by the surgery



We would appreciate it if you could come at the above times in order to MINIMIZE YOUR waiting time. However, if you are unable to come at the allocated time for your surname, please feel free to attend any of the appropriate clinics above. If you are not available to attend any of the above clinics please call the surgery after October 15th to book an appointment in November

Ivinghoe Town Hall... News!

Thank you – to all our regular and ad-hoc Hirers! At our recent AGM we were pleased to report that over the last 12 months we had in excess of 90+ Bookings!

The Ivinghoe Town Hall Management Committee (ITHMC) are still in need of Chairperson. It is not an arduous job but someone local who would like to contribute by supporting the small dedicated team which keeps everything afloat for the benefit of Ivinghoe, Pitstone and all our Local Villages.

The Town Hall (ITHMC) – Charity No.300287 – also incorporates the “Beacon Villages Community Library”.

Karen Groom kindly agreed to Chair our AGM meeting and it was agreed that we should appoint a Vice President, for which Stephen Lott was nominated. For historic reasons Stephen Swinbank had been acting both as Booking Clerk and Secretary for many years. Fortunately Sue Eyre was proposed and agreed to become our Secretary, which was much appreciated.

As we reported last quarter, your Town Hall (17th Century Grade II – Listed Building) does require substantial remedial maintenance. Bucks CC are in the process of obtaining £’estimates, pending BCC financial approval before any work can start. We will keep everyone updated via The Beacon.

Useful tel no’s and email

The Beacon Villages Community Library
Tel: **01296-87890**

The Beacon Villages Community Library
Email: **info@bvcl.org.uk**

The Ivinghoe Post Office and Shop
Tel: **01296 660682**

Ivinghoe Town Hall regular events:

Monday: 4pm – 8pm – **Ballet**
Lisa Sabatinni (07834 281434)

Monday: 8pm – 9pm – **Boxercise**
Josh Thompson (07456 574405)

Tuesday: 9.45am – 12pm – **Beacon Art**
Marion Jackson (01296 668429)

Tuesday: 7pm – 8pm – **Zumba**
Carolyn Syme (07941 092673)

Tuesday: 8.15pm – 10.15pm – **Morris ‘New Moon’ Dancers** Martin Lindridge (07803-149490)

Wednesday: 9.15am – 10.15am
Natural Pilates Andrea (07855 138005)

Wednesday: 7pm – 8:30pm **Yoga**
Sally Craig (07753-985155)

Thursday: 9.30am – 10.30am **Zumba Fitness** Joanna Read (07912 644654)

Thursday: 7.00pm – 10.00pm **W.I.**
2nd Thursday of each month
Sue Eyre (01296 709281 or 07742 138955)

To Hire Ivinghoe Town Hall:
Stephen Swinbank (The Booking Secretary) on **01296 660680**.

Or email: **spswinbank@gmail.com**

Also, please try the web site at **www.ivinghoetownhall.org.uk** where you can see regular activities and search for Hall availability dates, and make a Booking enquiry online.



Historic user-friendly Hall with awards for Best Used and Managed Small Hall in the County. Sited in the centre of the Village, the Town Hall provides modern facilities for local groups, parties and fundraising activities.

IVINGHOE TOWN HALL

www.ivinghoetownhall.org

Planning a party or meeting?

Facilities include:

- Music options including a quality electronic piano
- Stage with specialised lighting, curtains & dressing room
- Kitchen with microwave, oven, hob, fridge, comprehensive crockery and glassware
- Chair lift/wheelchair for those with mobility problems.

If you would like further information, contact Stephen Swinbank on 01296 660680 or spswinbank@gmail.com

FORD END WATERMILL IVINGHOE, BUCKINGHAMSHIRE

The only working watermill to survive intact in the county. The mill, recorded in 1616 but probably much older, was in use until 1963.

Now restored by volunteers and run by Ford End Watermill Society, it retains all the atmosphere of a small farm mill of the late 1800s. Visitors can work the sack hoist and mill wheat on a rotary hand quern. Stoneground wholemeal flour for sale on milling days.

OPENING TIMES 2019

Open between 2pm and 5pm on the following dates with milling demonstrations between 2-30pm and 4-30pm approx
Water level permitting

Last Admission 4-30pm. Admission: Adults: £3 children (5-15) £1
31st March - Sunday • 22nd April - Easter Monday • 6th May - BH Monday
12th May - National Mills Sunday • 27th May - BH Monday
16th June - Sunday • 14th July - Sunday • 29th July - Sunday
11th August - Sunday • 26th August - BH Monday • 8th September - Sunday
13th October - Sunday as part of Tring's Own Apple Fayre.

Ample car parking – no toilet facilities. Restricted disability access
School and other parties welcome by arrangement.

Contact: Mill Manager - Chris Tugby, millman@fordendwatermill.co.uk
or Telephone: **01442 825421**. www.fordendwatermill.co.uk



LOCATION

Station Rd, Ivinghoe, Bucks LU7 9EA
600 metres from the church along Station Road.
The B488 to Leighton Buzzard.



Hub News...



Midsummer is upon us as I write this and the Village Fete has already seen us all gather together as a happy community, the Hub now storing the props we made for the **Save the Environment/Climate Change** theme that saw some of us dressed as plastic detesting sea mermaids!

With a very happy Spring Market behind us – combining daffodils, face painting, animal cuddling 45 Chocolate eggs courtesy of the trustees friend the Easter Bunny, what was not to like and enjoy!

As usual many celebratory parties, sad funeral wakes and gatherings to make crafts, become fitter and learn more, have been filling the hall spaces with just last night a very tasty and friendly 'Greek theme' pop-up restaurant being filled to capacity as very satisfied guests of CuriosiTEA Rooms café our Hubs unique tenants.

Thank you to Andrea for running our freebie experiment in 'exercise for the less mobile' over several months which was well attended. As the grant has now run out and the exercise class come to a halt I am sure those who used this facility will want to express thanks for the initiative to the Hub trustee grant fund form fillers and Andrea?

So, looking forward as a community volunteer run Hub we have the annual **Ivinghoe and Pitstone Flower and Veg Show 2019 Saturday September 14th** taking place in the Hub space on and also spilling into the Upper Town Hall this year to give it more elbow room! Whilst the judges are doing the serious business of weighing up our numerous entries for growing, cooking, arranging and creating

talents – **we in the Hub are seeking out market stall holders to book up** online to entertain the community with harvest home/ Autumnal themed market stalls in and around the outside Hub spaces, so that locals can **make a day of it** if they wish with refreshments at both venues!! Open to all ages and emerging talents - this Show welcomes all your entries to keep this event as part of our community fun. Do read the 2019 new challenges and take part Paper copies of the Veg Shows schedule of challenges and rules are to be found in the Hub Cloakroom and online on our website at this link – **<http://www.ivinghoeoldschool.com/wp-content/uploads/2019/06/FINAL-2019-SCHEDULE-of-FLOWER-SHOW-May-for-Sept-2019.pdf>** – **Good Luck!**

Happy 6th Birthday Ivinghoe Community Hub – Every year our Community Hub will celebrating another years existence with a Friday evening Wintry Market coming up in late November with sparkling stalls of presents inside and out and meanwhile the second Tuesday in each month welcomes stallholders and buyers alike on both sides of the hireable Hub tables, so please come along and buy if you don't hire a table to sell!

All of these small things go towards an more open and inclusive community spirit in Ivinghoe and surrounding spaces, so **PLEASE consider becoming a Hub volunteer a few free hours a week**. We would welcome the generous volunteering of your time and make you feel part of the

workings of this community run voluntary space, if and when you let us know you are willing. USE IT LOOSE IT is a somewhat harsh phrase but sadly true. We saved the building for this community and though our business plan is eminently sensible and practical, the project is all about people friendly activity and increased happiness, so please fully join in! **We need you please – you are all so welcome to be a valued part of it!**

Carol Tarrant as Chair of voluntary Trustees.

www.ivinghoeoldschool.com
ivinghoeoldschoolcommunityhub@btconnect.com

Our Hub run by this community for all.

HOW TO BOOK HUB SPACE: Booking space within the Hub is easy but needs to follow through by the Hirer who:

- 1 Approaches café team who man the Hub Diary 7 days a week at café counter or the Hirer approaches Trustee team via phone **01296 661666** or email **ivinghoeoldschoolcommunityhub@btconnect.com**
Half space £9/£7 per hour or whole hall £12/£10 per hour. (or an element of the IT Room after negotiation)

- 2 The process is explained by obtaining from either source a **vital Booking Form** which includes the extra special options bookable, the insurance cover and awareness of the hirers cleaning up obligations - to be filled in and returned within 7 days and the fee paid – if not then – no later than 3 days before the date booked.
- 3 By this returned form and fee, the booking is **made formal and then penned into diary** which means it cannot be over-ridden or double booked.

Email: **ivinghoeoldschoolcommunityhub@btconnect.com**

Facebook: **Ivinghoe Old School Hub**

Website: **ivinghoeoldschool.com**

Thanks, Carol T at the Hub



Our Hub run by this community for all

HOW TO BOOK HUB SPACE: Booking space within the Hub is easy but needs to follow through by the Hirer who:

1. Approaches café team who man the Hub Diary 7 days a week at café counter or the Hirer approaches Trustee team via phone **01296-661666** or email **ivinghoeoldschoolcommunityhub@btconnect.com**
Half space £9/£7 per hour or whole hall £12/£10 per hour. (or an element of the IT Room after negotiation)
2. The process is explained by obtaining from either source a **vital Booking Form** which includes the extra special options bookable, the insurance cover and awareness of the hirers cleaning up obligations – to be filled in and returned within 7 days and the fee paid – if not then – no later than 3 days before the date booked.
3. By this returned form and fee, the booking is made **formal and then penned into diary** which means it cannot be over-ridden or double booked – This booking then translates to our 'digital diary' graphically – charted monthly by Bob to ensure visual awareness of all bookings- posted on Facebook Page, web-site and email data-base, hard copy on Notice Board for Public viewing.

Join in with your DIY skills please! You are all so welcome to join in!

Guides Get Out There...

Guides get out there and do something really different. Our Guides plan their own meetings and explore new places, go on camps and trips, and learn skills for life that aren't taught in schools.

This term at 1st Ivinghoe and Pitstone Guides we've learnt how to start a fire without using matches, cooked a chilli con carni on the open fire, learnt life hacks to help make everyday tasks easier, and learnt all about the importance of bees and how bees are kept, plus some of our Guides have been on the Buckinghamshire joint

Guides and Scouts camp where they experienced lots of new activities such as climbing, caving, pioneering, archery and survival skills.

Guides is open to all girls aged 10-14. If your daughter would like to find out more we will be delighted to welcome her at one of our meetings to experience what we do.

We meet at Ivinghoe Old School Community Hub, 2 High St, Ivinghoe on **Tuesday evenings from 7.00 – 8.30pm.**

To find out more contact Rebecca Capron on **07545 347787** or email **beckylonghurst@hotmail.co.uk**



Rainbows: Monday 4.30 – 5.30pm Pitstone Memorial Hall
Guider: Elaine Thorogood **01296 661540**

Brownies: Monday 5.45 – 7.15pm Pitstone Memorial Hall
Guider: Elaine Thorogood **01296 661540**

Girl Guides: Tuesday 7.00 – 8.30pm Ivinghoe Old School Village Hub, High Street, Ivinghoe Hall. Guider: Rebecca Capron **07545 347787**
Email: **beckylonghurst@hotmail.co.uk**

To join us, please visit our website at **Girlguiding.org.uk**

The BeaconLit News Release



Magnificent Seven Up for our Literary Festival

The sun came out, and so did the stars, as BeaconLit – Ivinghoe’s answer to Hay on Wye – notched up its seventh fabulous festival for book lovers.

Poldark actor turned thriller writer Robert Daws delighted the audience with anecdotes and charm in conversation with the BBC’s Adina Campbell, while Quentin Bates brought a touch of frost – a contrast to the tropical backdrop in Brookmead School hall – as he chatted to local crime writer Dave Sivers about his Iceland-based Scandi-Noir fiction and a lot more besides.

There were lively panels too. Hot newcomers Noelle Holten, West Camel and Fiona Vigo Marshall showed why they’re being tipped as future bestsellers; Indie authors G L Twynham, Jane Davis and Lesley Lodge talked about self publishing and going it alone; and crime authors Alison Bruce, Leigh Russell, A B Morgan and Dave Sivers compared notes about killing people on the page.

Readers and writers alike enjoyed Morgen Bailey and Alison Morgan demystifying the publishing business, and there were book signings and free draws for super book bags.

BeaconLit 2020 will be in Brookmead School on 11 July next year. Local book lovers will be saving the date already!

Too Long Gone – the new Archer and Baines novel from Dave Sivers, now available for Kindle eBook.pre-order



www.davesivers.co.uk

BeaconLit promotes books and writing in the Beacon Villages and also raises funds for our local library.

To see the full programme and buy tickets, go to the festival website is www.beaconlit.co.uk.

Dave Sivers

Queen Victoria's Bicentenary Celebration

Continuing their festival to celebrate the double bicentenary this year of both Queen Victoria and Prince Albert, the Ridgeway Ensemble present **'Victoria and Albert – a musical romance'** on **Saturday October 5th at 7.30pm** at **Holy Trinity Church, Potten End**.

A slightly shortened version of the programme can also be heard on **Saturday September 28th at 11.30am** at the **Church of Christ the Cornerstone, Milton Keynes**, and on **Monday October 21st at 1.10pm** at **All Saints Church, High Wycombe**.

The programme brings to life the musical world of the royal couple, through readings from their letters and diaries, contemporary accounts and music by composers such as Mendelssohn, Bellini, Elgar and Sullivan. At the heart of the programme are three songs by Prince Albert himself for voice,

cello and piano, which have remained unpublished and unperformed until now, and also noteworthy is the inclusion of works by three women composers – Fanny Mendelssohn, Clara Schumann (whose bicentenary also falls this year) and Pauline Viardot.

The Ensemble (Judith Sheridan, voice, Margaret Richards, cello, Daniel King Smith, piano, and William Winfield, reader,) performs regularly for music clubs, churches and other organisations throughout the country and abroad. If you missed our concerts in May come and join us this autumn as we celebrate the tastes and musical achievements of Victoria and Albert, opening a window onto the musical life of Victorian England. **Holy Trinity Church, Potten End, HP4 2UY on Saturday October 5th at 7.30pm. Admission £8** on the door.or book tickets online www.ridgewayensemble.co.uk



A VICTORIA & ALBERT MUSICAL ROMANCE

THE RIDGEWAY ENSEMBLE
 JUDITH SHERIDAN (VOICE) MARGARET RICHARDS (CELLO)
 DANIEL KING SMITH (PIANO) WILLIAM WINFIELD (READER)

RIDGEWAY
ENSEMBLE

VICTORIA & ALBERT – A MUSICAL ROMANCE

Queen Victoria and Prince Albert's mutual passion for music was at the heart of their relationship from the very beginning. An accomplished composer, Albert shared his creative process in letters to the young queen and, as their married life progressed, it was punctuated by concerts, private performances and audiences with the musical elite of Europe.

The Ridgeway Ensemble brings to life the musical world of the royal couple, through readings from their letters and diaries, and contemporary accounts of meetings with composers such as Mendelssohn, Clara Schumann, Liszt, Grieg and Sullivan. At the heart of the programme are songs composed by Prince Albert for voice, cello and piano, which have remained unpublished and unperformed until now.

The programme reflects the tastes and musical achievements of Victoria and Albert, including music by Mendelssohn, Clara Schumann, Bellini, Elgar and Sullivan, opening a window onto the musical life of Victorian England.

THE RIDGEWAY ENSEMBLE was formed in 2008 to bring both popular and less widely performed music to churches and communities within Bucks, Beds and Herts. They can be heard performing regularly at National Trust property Claydon House, and recent engagements have included concerts for the Aylesbury Festival, Buckingham University, Hampstead Music Club and a tour of southern France.

Judith Sheridan (voice) studied at the RNCM and Lancaster University before completing her studies at the opera school in Hamburg. After working as a soloist in theatres and concert halls on the continent, she returned to the UK to continue her career as a soloist and conductor. Judith regularly sings with ensembles in the UK and the USA, combining this with a busy schedule as a choral conductor, and is MD to the Berkhamsted Youth Theatre and guest conductor and vocal consultant to the Amade Players.

Margaret Richards (cello) is a graduate of Girton College, Cambridge and the Royal Academy of Music. For six years she played in the orchestra of the Staatstheater Darmstadt, Germany, before returning to London to pursue her interest in baroque music in particular. As both cellist and viola da gamba player she has performed internationally with many ensembles, including the Hanover Band, London Festival Orchestra, New London Consort and Florilegium. She plays regularly with the Holborne Players, and with the Apollo Consort she has recorded works by the 17th-century composer John Jenkins.

Daniel King Smith (piano) performs internationally as both soloist and accompanist. A finalist in the BBC Young Musician of the Year, he went on to win the Harold Craxton and Max Pirani prizes as a student at the Royal Academy of Music, and prizes for both solo and accompaniment at the Haverhill Sinfonia competition. Formerly staff accompanist at both the Royal College of Music and Royal Academy of Music Junior Departments and at the Purcell School, he has performed at the Royal Festival Hall and Wigmore Hall, and now works entirely as a freelance chamber musician. Daniel has recorded a number of CDs, including releases with Anna Hashimoto on the Meridian label.

The Ridgeway Ensemble is joined by **William Winfield**, a modern languages graduate of Cambridge University. The former head of a London independent school, William combines his lifelong passions for chamber music and language as reader for many Ridgeway concerts.



RIDGEWAY
ENSEMBLE

Streamline

Paving & Builders

We specialize in:

- Block Paving
- Driveways & Patios
- All Roofing



Why choose us?

- All Work Guaranteed
- Over 25 Years' Experience
- Written Quotations
- Free Estimates
- Pay on completion



Office: 01582 380040

Mobile: 07947 812363



BVCL 100 CLUB

Now in its 4th Year!

**Come and join our many prizewinners
and help to support your local Library.**

**Why not pick up a pack at the Library
in Ivinghoe? Or email**

**treasurer@bvcl.org.uk for further
details and an online application form.**

James B Chadburn FBHI Fine Antique clocks & Barometers

Specialist in repairs & restorations.

Valuations & clock finding service.

Advice & assistance on formation & disposal of private clock collections.

Quality clocks/barometers Bought & sold.



Telephone 01525 221165

Mobile 07790 000629

E-mail: info@jameschadburn.com

A note from the Editor...

I very much hope that you are still enjoying reading the Ivinghoe Beacon magazine, it has changed a little since the Parish Council took over the production of the magazine.

We really want the magazine to be something you get pleasure from reading as well as a useful reference tool for local events and advertising.

We are always looking for new ideas to keep the magazine an interesting read, so if you have something that you would like to be considered for inclusion, please do get in touch!

Many thanks and happy reading.

Bridget Knight The Editor
ivinghoeclerk@gmail.com



Volunteer and help bring a smile to someone's face...

...our volunteer befrienders do this every day

Living with dementia can be isolating. Alzheimer's Society volunteer befrienders make a difference. Find out more about volunteering with us by having a chat with Laura or Lisa on 01296 331722 or emailing bucksbefriending@alzheimers.org.uk

We'd love to hear from you.

Alzheimers.org.uk

Alzheimer's Society operates in England, Wales and Northern Ireland.
Registered charity number 296645.



NHS
Aylesbury Vale
Clinical Commissioning Group



NEW MEMORY SUPPORT SERVICE IN BUCKINGHAMSHIRE

If you are concerned about your memory, the earlier you seek help the better as there may be support or treatment available that can help you.

There are many different things that can cause memory problems but sometimes it can be an early sign of dementia.

This new service helps you to take control of your situation by offering a single point of contact for:

- Advice and support through memory screening and diagnosis
- A listening ear and practical support afterwards

Get in touch today to find out more.

01296 331749

memorysupport@alzheimers.org.uk

Streetlight update...

The project to replace the streetlights within the parish of Ivinghoe continues. Separate contracts for the supply and installation of the new LED lights have been issued and we are now in the final phase of planning before we start changing the lights.

The works should be completed during the summer months.

Over the coming weeks and months, you may come across our installation contractor Sparkx anywhere in Ivinghoe, Ivinghoe Aston, Ford End or Great Gap. They will be highly visible in their orange gear and logo'd vehicles.

For most of the lights owned by IPC it will only involve a straight replacement. In some cases, we are having to replace lampposts while other sites are going to need major works with replacement electrical supplies being required. Please bear with us while these works are completed. As soon as we have a

detailed schedule, we will advertise this on our website.

Over the same period, Bucks CC are planning to replace their lights in High St, Ivinghoe. We are advised that the style of lights that they are going to use will be the same as that being used by IPC, thereby giving a uniform approach to all streetlighting within the parish. At the time of going to press, it is not envisaged that Bucks CC will be replacing the 3 lights in Church Road or the 3 lights along the footpath by Brookmead School until possibly next year, so some orange lights may remain.

If you have any enquiries or comments about the upgrading of the streetlights, please contact Bridget Knight, Parish Clerk, via the website www.ivinghoeipc.org.uk or phone on 07960 605393.

Ivinghoe Parish Council



JTS DECORATING SERVICE AND PROPERTY MAINTENANCE

**FIRST CLASS DECORATION WITH
35 YEARS EXPERIENCE**

Private and commercial properties all
interior, exterior decoration and coving.

Wall, Floor Tiling and Plastering.

Floor stripping and renovation local

references available,

contact: John

T: 01525 240372

M: 07809 113090

Email: JTS.DEC24@GMAIL.COM


GROOM'S FARM SHOP
YOUR LOCAL BUTCHERS

OPENING TIMES

Thursday - 9:00am - 12:00am

Friday - 8:00am - 5:00pm

Saturday - 8:00am - 1:00pm

Sunday - Wednesday: Closed

Fresh meat & poultry
Free range eggs & vegetables

Willowdene Farm
Ford End, Ivinghoe
LU7 9EA

01296 668326

info@groomsfarm.co.uk

www.groomsfarm.co.uk

Follow us on Facebook & Instagram



**BELLOWS MILL
EATON BRAY**

Attractive short term and overnight
accommodation
in idyllic surroundings of old water mill.
Licensed for civil wedding ceremonies
and receptions for up to 80 guests.
Small meeting room.

For details phone 01525 220548
or email reservations@bellowsmill.co.uk

TOWN FARM



Town Farm • Ivinghoe • Leighton Buzzard • Beds LU7 9EL

*A new campsite
right at your doorstep!*



T: 07906 265435

www.townfarmcamping.co.uk

Another busy year for the 1st Ivinghoe and Pitstone Scout Troop



In the Autumn Term, the Scouts and Cubs had a very successful and wet joint water camp at Longridge experiencing amongst other activities, dragon boating and paddle boarding. We also had the opportunity to invest some new Scouts on the water. We enjoyed a joint Wide Game with Cheddington Scouts in Tring Park followed by fresh chips in Dolphin Square, a morning volunteering with the Greensands Trust at Linslade Woods, helping at the Church Christmas Market and delivering Church flyers, an evening of climbing at XC Hemel Hempstead, and December saw the return of our popular Scout Christmas Post.



The Spring term found us out of the hut and based at Brookmead School. We worked towards our Personal Challenge and Disability Awareness badges, managed an overnight Bivi camp at Braid Wood building our accommodation from tarpaulin, trees and branches and cooking on an open fire, and got thoroughly dusty cleaning St Mary's Church and Bell Tower. We finished the term with a Scout choice evening – laser quasar at Hemel Hempstead.



Back in the hut for the Summer term and we have serviced our bicycles in anticipation of a Summer cycle, hosted our District St Georges Day event, showcased our pioneering skills at the Church Summer Fete, assisted with car parking at the Marsworth Steam Rally, and had a very enjoyable visit around the Arla Dairy at Aston Clinton, where we had the chance to sit in a lorry cab, saw milk bottles being filled and labelled and watched the robots move the crates of milk bottles around the factory.



The highlight of the Summer term has to be Mission 00 Bucks – a County Camp on the Claydon House Estate at the end of May. Over 4000 children plus leaders attended, with our Scouts and Cubs camping from Friday night to Monday lunch and our Beavers visiting for the day. There were 5 activity zones available and

activities included shooting, drumming and dance lessons, inflatables, climbing walls, crafts, circus activities, go carts, there was something for everyone during the day and live bands, films a roller disco and free candy floss in the evening. A great weekend was had by all.



The Scouts are always on the lookout for ideas for interesting activities and if you have any particular skills that could help us do some of the more specialist badges or know of any exciting places we could visit, please contact us on: **firsti_pscouts@yahoo.co.uk** if you are interested in joining any section of the Scout Group, please email:

ivinghoe.pitstone.scouts@gmail.com

Izzy Robinson



1st Ivinghoe and Pitstone Beavers (5 3/4 - 8 year olds)

Monday 6-7pm with Tom as Watermill Colony leader

Tuesday 6-7pm with Jakki as Windmill Colony leader

1st Ivinghoe and Pitstone Cubs (8-10 year olds)

Wednesday 6:30-8pm (Dan) Akela as Windmill Pack leader

Thursday 6:30-8pm (Rob) Shere Khan as Watermill Pack leader

1st Ivinghoe and Pitstone Scouts (10 1/2 - 14 1/2 year olds)

Friday 7-8:30pm Andrew as Troop Leader

For any enquiries or to join the waiting list please contact us

on ivinghoe.pitstone.scouts@gmail.com

Or our Group Scout Leader, Andrew Woods on ivinghoe.pitstone.scouts@gmail.com or 07768 980311

We are also raising money to rebuild the village a purpose built scout hut and are selling bricks to supporters for £10 each. Please email the above address for details.

Tring and Cheddington Railway Stations



London Northwestern Railway, working with local Town and Parish Councils, community organisations and local authorities – are putting together a comprehensive station travel plan to cover Tring and Cheddington. The first part of the process is all about understanding travel needs of people that use – and don't use – the stations at present. **Can you help out?** Your feedback would be invaluable.

Stations as Places is a chance for your community to have a say on your local station! The Stations as Places programme aims to make your station work for the community it serves. We want our stations to be accessible to everyone who may want to use them and be welcoming places that offer you the information you need to not only get from home to work but also for family to days out, business travel and other leisure travel. To do this though, we want your help! We want to know how you use and see the station so we can help it fit your communities' needs.

As a part of getting to know how you use your station, we've made a survey to give you your say! It should only take 5-10 minutes and asks you about a variety of things on how the station serves the community.

From travel habits, station facilities and accessibility issues. See the following pages for the survey which you can fill in and hand in at our drop off point at Tring Station. If you can't make it to the station to drop your survey off but still want to have your say, you can also fill in an online version of the surveys at

<https://www.smartsurvey.co.uk/s/TringLNR/-for Tring> **<https://www.smartsurvey.co.uk/s/CheddingtonLNR/-for Cheddington>**

To find out more please contact Jon Harris, the Integrated Transport and Accessibility Manager – you can reach Jon on **07970 447880** or email **jon.harris@wmtrains.co.uk**



Tring Station Travel Snapshot Survey:

As part of the new Stations as Places programme, London Northwestern Railway is undertaking research to find out how passengers travel to their local stations and what improvements they would like to see made at the site itself. If you would like to complete this survey online, please visit:

<https://www.smartsurvey.co.uk/s/TringLNR/>

1. What is your home post code?
2. What is your nearest station?
3. What station do you usually depart from?
If different to above, please say why?
4. Do you use the train for: Commuting, Business, Leisure, Tourism, Education? (All that apply)
5. How often do you use the train?
Daily / 2-3 per week / Weekly / Monthly / Occasionally / Never
6. Do you own a season ticket?
Weekly / Monthly / Quarterly / Annually / No / Other (please specify)
7. How do you usually travel to the station?
Walk / Cycle (stored at station) / Cycle (taken on train) / Folding Bike / Electric bicycle / Car (parked) / Car (drop off) / Electric vehicle / Car share / Motorbike / Bus / Taxi / Other (please specify)
8. How long does it usually take to travel to the station from your home? (minutes)
_____ minutes
9. If you drive, where do you park your car?
Station site, on street (please specify), alternative location (please specify), I do not drive

16a. To what extent would you be interested in a tailored transport solution for travelling to and from the station during peak periods? This could be used to address gaps in existing public transport services.

Very interested / Interested / Uninterested / Not interested at all / Don't know

b. What would make this option appealing to you?

c. Which of the following payment options do you think would be suitable for a tailored transport solution (select all that apply)

Online Subscription / Prepaid Membership Card / Contactless Card (pay as you go)

Cash (pay as you go) / App based Payment / Advanced Phone Payment / Other (please specify)

17. Have you ever had a mobility access issue on journey to/from your local station or at your local station i.e. access ramp gradient?
If yes, please specify
Yes / No

18a. Are you aware that Tring station recently received funding under the Department for Transport 'Access for All' scheme and as such new lifts, ramp and footbridge will be installed at Tring?
Yes / No

18b. Would you or a family member be more likely to use Tring station following the installation of these facilities to overcome mobility access issues?
Yes / No

19. Have you been a victim of crime, cycle crime or antisocial behaviour at Tring station? If you are comfortable in doing so, please inform us of the nature of the incident.
Crime, Cycle Crime, Antisocial Behaviour, None of the above

OPTIONAL DEMOGRAPHIC QUESTIONS

Age? Under 18 / 18-24 / 25-34 / 35-54 / Over 55

Gender? Male / Female / Prefer not to say

10. What are the three main factors that influence how you travel to and from the station?
Cost / Convenience / Parking or storage / Distance / Accessibility or Disability / Car share / Weather / Travel time to station / Service reliability / Health and fitness / Environmental / Other commitments / Other (please specify)

12. How safe would you feel leaving your bike at Tring station?
Very safe / Safe / Unsure / Unsafe / Very Unsafe / Unusable as a result

13. Which of the following would help convince you to cycle to Tring station on a regular basis? (all that apply)

Secure racks with CCTV coverage / Swipe card access cycle hub / Increased cycle parking capacity / pop up bike maintenance sessions / dedicated cycle route to the station / cycle lessons / information on types of bikes

14. When making your most regular journey, would you ever consider switching to any of the following modes of green transport to form part or all of your journey? (select all that apply)
Bicycle / Folding Bicycle / Electric Bike / Hire or Pool bikes / Electric vehicle / Car Share / Other (please specify) / I have never considered any of the above

15. London Northwestern Railway will shortly be introducing a carsharing scheme at Tring station. We are also looking at providing a ride home via a taxi if your lift cancels or significantly alters your timing. Is this something which you would be interested in? If yes, please provide a contact email* and we will in touch with sign up information.
Yes Email: _____
No

*Your data is protected by GDPR regulation and cannot be passed onto third parties without your consent

20. How would you rate the quality of the following at your local station?
0 Non-existent, 1 Needs Improvement, 2 Adequate, 3 Good, 4 Excellent

Seating _____ Lighting _____ Passenger information screens _____

Cycle storage and security _____ CCTV and Personal Safety _____

Pedestrian access points _____ Attractiveness _____ Cleanliness _____

Community projects _____ Parking _____ Public Transport Connections _____

Local Walking Connections _____ Local Cycling Connections _____

Additional Comments – How could we improve your local station or help you access your local station?



Cheddington Station Travel Snapshot Survey

As part of the new Stations as Places programme, London Northwestern Railway is undertaking research to find out how passengers travel to their local stations and what improvements they would like to see made at the site itself. If you would like to complete this survey online, please visit:

www.smartsurvey.co.uk/s/CheddingtonLNR/

- What is your home post code?
- What is your nearest station by travel distance?
- What station do you usually depart from?
If different to above, please say why?
- Have you ever elected to use Tring station instead of Cheddington? If yes please tell us why?
- Do you use the train for: Commuting, Business, Leisure, Tourism, Education? (All that apply)
- How often do you use the train?
Daily / 2-3 per week / Weekly / Monthly / Occasionally / Never
- Do you own a season ticket?
Weekly / Monthly / Quarterly / Annually / No / Other (please specify)
- How do you usually travel to the station?
Walk / Cycle (stored at station) / Cycle (taken on train) / Folding bike / Electric bicycle / Car (parked) / Car (drop off) / Electric vehicle / Car share / Motorbike / Bus / Taxi / Other (please specify)
8a. If you drive, can you always find a space at the station site? Yes / No
8b. Where do you usually park your car?
Station site, on street (please specify), alternative location (please specify), I do not drive
- How long does it usually take to travel to the station from your home? (minutes)
_____ minutes

16. How happy are you with the frequency of departures from Cheddington station on the following days?

Mon – Fri	Very Satisfied	Satisfied	Acceptable	Unsatisfied	Very Unsatisfied	Not Sure
Saturday						
Sunday						

17a. To what extent would you be interested in a tailored transport solution for travelling to and from the station during peak periods? This could be used to address gaps in existing public transport services.

Very Interested / Interested / Uninterested / Not interested at all / Don't know

b. What would make this option appealing to you?

c. Which of the following payment options do you think would be suitable for a tailored transport solution (select all that apply)

Online Subscription / Prepaid Membership Card / Contactless Card (pay as you go)
Cash (pay as you go) / App based Payment / Advanced Phone Payment / Other (please specify)

18. Have you ever had a mobility access issue on journey to/from your local station or at your local station i.e. access ramp gradient?
If yes, please specify
Yes / No

19. Have you been a victim of crime, cycle crime or antisocial behaviour at Tring station? If you are comfortable in doing so, please inform us of the nature of the incident.
Crime, Cycle Crime, Antisocial Behaviour, None of the above

OPTIONAL DEMOGRAPHIC QUESTIONS

Age? Under 18 / 18-24 / 25-34 / 35-54 / Over 55
Gender? Male / Female / Prefer not to say

10. What are the three main factors that influence how you travel to and from the station?
Cost / Convenience / Parking or storage / Distance / Accessibility or Disability / Car share / Weather / Travel time to station / Service reliability / Health and fitness / Environmental / Other commitments / Other (please specify)

12. How safe would you feel leaving your bike at Tring station?
Very safe / Safe / Unsafe / Very unsafe / Unsafe as a result

13. Which of the following would help convince you to cycle to Tring station on a regular basis? (all that apply)
Secure racks with CCTV coverage / Secure coat access cycle hub / Increased cycle parking capacity / Pop up bike maintenance sessions / Dedicated cycle route to the station / Cycle lessons / Information on types of bikes / Route information

14. When making your most regular journey, would you ever consider switching to any of the following modes of green transport to form part or all of your journey? (select all that apply)
Bicycle / Folding bicycle / Electric bike / Hire or food bikes / Electric vehicle / Car share / Other (please specify) / I have never considered any of the above

15. London Northwestern Railway are looking to introduce a carsharing scheme at Cheddington station. We are also looking at providing a ride home via a taxi if your lift cancels or significantly alters your timings. Is this something which you would be interested in? If yes, please provide a contact email* and we will in touch with sign up information.
Yes (Email: _____)
No

*Your data is protected by GDPR regulation and cannot be passed onto third parties without your consent

20. How would you rate the quality of the following at your local station?
0 Non-existent, 1 Needs Improvement, 2 Adequate, 3 Good, 4 Excellent

Seating _____ Lighting _____ Passenger information screens _____

Cycle storage and security _____ CCTV and Personal Safety _____

Pedestrian access points _____ Attractiveness _____ Cleanliness _____

Community projects _____ Parking _____ Public Transport Connections _____

Local Walking Connections _____ Local Cycling Connections _____

Accessibility & Disabled Access _____

Additional Comments – How could we improve your local station or help you access your local station?

FORD END WATERMILL



Ford End Watermill, for those not familiar with it, is a small farm mill, which has produced flour and animal feed for centuries. On Station Road, just a short distance from the centre of Ivinghoe, it is run today entirely by volunteers. The mill is fully operational and we mill at each opening to the public. Our wholemeal flour is much sought after.

Would you like to join our team of volunteers?

We would welcome volunteers who can:

- help maintain the mill through this Autumn, Winter and Spring in readiness for next year's openings.
- help us welcome our visitors as they arrive for one of our openings each Summer - on Sundays and Bank Holidays; and/or
- guide visitors around the mill describing how we use the power of water from our millpond to drive our waterwheel, our gears and our millstones to produce our sought-after wholemeal flour.

There are opportunities for individuals with a variety of skills. So whether your preference is to meet our visitors, to explain all about the mill to visitors or to get to grips with the mill building and its machinery – the choice is yours. We can provide you with the necessary training and we have all the relevant information about the mill – how it works, its history and how it has been restored.

We are a friendly group. All of us are committed to conserving this priceless resource for future generations. We can provide new volunteers with the satisfaction that comes from showing how the sustainable power of water can be used to produce flour for the baking of bread.

So, if you are interested, please telephone:

John Wallis on **01296 661997**;
Chris Tugby on **01442 825421**; or
Stephen Booth on **01296 661745**.

You can also contact us by email at millman@fordendwatermill.co.uk

Stephen Booth, Chairman, Ford End Watermill Society

'Time for a Rhyme'

Marsworth Flower Festival 24th-26th August

We will be running our flower festival this year at **All Saints Church, Marsworth** over the August Bank Holiday. The theme we have given to our team of flower arrangers is **'Time for a Rhyme'**. It sounded catchy and as we hoped they have been choosing poems, nursery rhymes and sayings of all sorts. We are looking forward to a wide range of imaginative and colourful displays.

Poetry is an important expression of our wonder at the world around us and our deepest feelings. Many of the hymns we sing in church started as verse and were later set to music. There are poems in scripture that date back thousands of years that still resonate with our thoughts about God today.

The mathematician in me is fascinated by the patterns in poetry and I find myself reading and re-reading the words to spot rhythms, rhymes and word-plays in the text. One sometimes senses that each word was chosen and each line and each sentence constructed precisely by the author.

We would never gallop through a book of poems with the haste we move through a novel excited to know what will happen next. Reading poetry is a much slower process; it takes time and so **'Time for a Rhyme'** is rather apt. Poetry slows us down. It stimulates reflection. It makes us to take time, to stop and think as we read.

For many people life is lived at a hectic pace. We are busy with so many things and can't escape the unremitting 24 hours per day flow of news and social media from the web. Perhaps the flower festival will not only be a moment to stop and enjoy the artistic skill of the arrangers and the beauty of creation but an inspiration to discover poetry afresh and find the time it opens up to us as we slow down and discover depths of meaning in life.

Rev Adrian Manning..

Vicar of St Mary's Ivinghoe with Pitstone



Pitstone Church

Pitstone Church Committee would like to thank everybody who helped in any way at the Festival this year. We made over £1,200 and much of that money came from the teas. Our cakes have an excellent reputation.

Our next event will be a performance of *Wind in the Willows* by the **This is my Theatre company** on **Thursday 22nd August at 3pm** in the church.

This is my Theatre is a company who specialise in performances in churches and other historic spaces. We are looking forward to seeing how they use Pitstone Church.

The Pitstone Church Committee (Friends) have devised a varied programme for this year.

Tickets and information are available from: **www.thisismytheatre.com**, tel: **07732 253311**. All the ticket information is on the website, but briefly, tickets are £10 each, £8 for concessions (over 65 and under 16). Family tickets are available.

There will be a service in the church on Heritage Sunday 8th September. Check the Ivinghoe Church website and noticeboards for details.

This years' programme
Icknield Sixteen Concert Saturday
13th July at 7.30pm.

Wind in the Willows Thursday
22nd August Matinee performance.

Christmas Memory Tree
Saturday 7th and Sunday 8th December.
We look forward to seeing you at these events. The Church will be open every Sunday and Bank Holidays from May to September from 2.30 – 5.30pm. Drop in and enjoy our peaceful atmosphere.

Gillian Arney





Dates for 2019

17th March

19th May

21st July

15th September

8th December

*From 2.30-4pm at St. Mary's
Ivinghoe*

Come and join us!

*For more details contact Sandra
on: 01296 668648*

IVINGHOE HAND-BELLS

We have a beginners group meeting fortnightly in the church ringing the beautiful hand-bells that belong to St. Mary's Church Ivinghoe.

If you missed the taster evening, and would like to have a go, or see and hear what happens it is not too late so please get in touch or come along to a Monday evening meeting. We have fun, a break for refreshments and experience the very special sound of our 139 year old bells.

Alex Wynne **01296 668336**



Ivinghoe & Pitstone Chapel Fellowship

Sunday Services are held on the **third Sunday** of each month, at 12 Church Rd unless otherwise specified, and start at 10.30 a.m. followed by refreshments

FIRST THURSDAY FRIENDS

Come and enjoy a family film on the **first Thursday** of each month.

Time: 2pm - approx 4.15pm in the millennium room, Pitstone Hall

PITSTONE OVER 60s' CLUB

We are a small and friendly group of local men and women who meet together for a varied programme of Speakers, Entertainment and Quizzes etc., plus Refreshments.

We meet at the Yardley Centre, Yardley Avenue,
on the **third Thursday** of each month: 2.00 – 4.00 p.m.

Interested? Need more information?

01296 668005

Join us for:



**ON SUNDAY
15th SEPTEMBER
2.30-4PM**

**AT
ST. MARY'S CHURCH
IVINGHOE**

**CRAFT, FOOD AND ACTIVITIES FOR
ALL AGES**

COME AND JOIN US!

RIDE + STRIDES for Churches

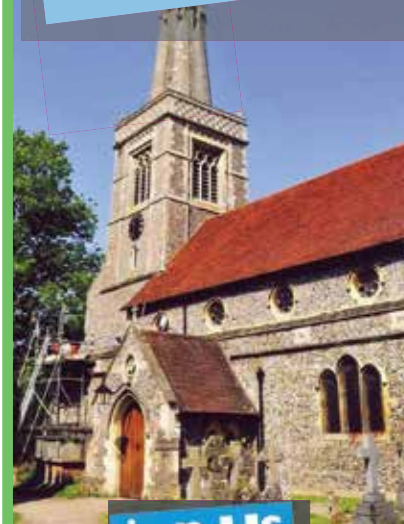
**14th SEPT.
2019**

BUCKINGHAMSHIRE'S CHURCHES OPEN DAY

Join us to keep Buckinghamshire's historic churches, chapels and meeting houses looking beautiful and open for the future.

Half the money you raise will go to the church of your choice, the other half to support the work of the Buckinghamshire Historic churches Trust

Choose your own route and travel at your own pace – enjoy the day.



join us



Contact:
ridestride@bucks-historic-churches.org

Your local parish contact

Izzy Robinson

Sponsor Forms and rota to man the Church are on the table inside the door in Ivinghoe Church in August

Find out more at
www.bucks-historic-churches.org

Charity number 206471

Supported by the
National Churches Trust
Charity Number 1119845





Ready for a healthier future?

Live Well Stay Well is a **free service** that has already **helped thousands of people in Buckinghamshire.**

You can get help with:



Stopping smoking



Managing your type 2 diabetes



Losing weight & healthy eating



Feeling stressed, worried or low



Getting more active



Reducing alcohol

Visit www.livewellstaywellbucks.co.uk

or call 01628 857311



Enhance a life today and become a Befriender!

You will be supporting lonely and socially isolated clients to build confidence, attend medical appointments, shopping and much more.



Interested?

Take that first step and contact our Volunteer Co-ordinators to find out how you can make a difference.

Buckinghamshire: **01296 484322**

volunteers@connectionsupport.org.uk

www.connectionsupport.org.uk

[@connectionsup](https://twitter.com/connectionsup)

[f ConnectionSupport](https://www.facebook.com/ConnectionSupport)

The King's Head, Ivinghoe 01296 668388

Birthdays ?
Anniversaries ?
Getting married ?
Just getting together

The King's Head is YOUR village's
fine dining restaurant.

Celebrate in style and let us make your
special occasion one to remember!



Don't forget our
Bon Appetit Luncheon Menu
(Mon—Sat) @ £24.75
Perfect for ladies who lunch!

The King's Head
"Welcome Card"

15% discount Monday to
Thursday evenings and many
more benefits.
Call 01296 668388
to claim yours



www.kingsheadivinghoe.co.uk



**Frustrated with your Home Technology not
doing what you want it to?**

... Let the Technology Doctors do it for you!

Wi-Fi/Broadband connection problems and signal boosting

PC and iPad help and tuition including connecting to your printer and back
up of your files and photos

Smart TV and Wireless Speaker configuration with Netflix/Spotify and
other services

Smart Home Security installations
and setup (e.g. cameras and doorbells)

Plus, many other services.

We're your local home technology specialists who can solve those everyday problems
that happen, give you help and advice on which products to choose and setup and
install them in your home.

Contact us via email: hello@thetechnologydoctors.co.uk or call us on 01296 534537

www.thetechnologydoctors.co.uk



RUM BABA, CHANTILLY CREAM AND RASPBERRIES

Recipe courtesy: Jonathan the Chéf at The Kings Head

Serves 8

Prep time 20 minutes

Total time 45 minutes

Baba Mix

125g strong flour

3 eggs

12g honey

5g dry yeast

75g cold melted butter

1/2 tsp salt

Place eggs, honey, yeast in a bowl and whisk

Add flour and salt, whisk

Add butter, whisk

Divide between 8 individual Savarin moulds, or similar moulds,
leave to double in size. Bake 10 – 12 min 350F

Leave to semi cool, turn out, dip in simmering syrup 15 seconds
each side place on to tray as they are cooling pour over a little
more syrup.

For the Syrup

1 kg water

100 g rum dark

1 orange zest

1 lemon zest

250g sugar

1/2 vanilla pod

Combine ingredients and
bring to boil and strain

To finish

Whipped cream and raspberries



Ivinghoe Allotments

Tales from the Plot



Well, Summer is really here – beautiful sunny days and very pleasant evenings. The real scorcher was Saturday 29th June when the temperature read 43 degrees and despite the door and the windows of the greenhouse being open the thermometer showed 45 degrees! Even the tomato plants were wilting and I just happened to be cutting logs in the morning and I had to have a siesta in the afternoon due to the heat.

The sunshine is great but then what about the rain we had a few weeks before? I had to lift my garlic up before they became water-logged and turned soft. The changeable weather has certainly affected some of my crops in different ways and talking to other plot holders (as you do) they appear to have experienced identical problems. Peas have been slow to get going, spinach sprouted very quickly while other plants thrived – lettuce, beetroot, onions and shallots all doing very well.

I have also been picking lettuce – Webb variety, it's a good crisp lettuce and no plastic wrapping! Courgette's are also doing well. I like to pick them when they are five inches long as they taste better than when they are larger.

During the next week or so I will be doing one of the most enjoyable, exciting and rewarding jobs in allotmenteeing – digging up my first early potatoes! Golden nuggets in the soil, and once dug up the skin comes off at the touch of a fingertip. Simply boil, add a knob

of butter once drained, add fresh broad beans, small courgettes and a couple of lamb chops complimented by a nice bottle of Australian red wine – please do not rush to order!

The allotment site is really looking good at the moment, with plenty of rich, vibrant and healthy colours. Well done to everyone for doing their bit to keep it looking that way!

In the last edition of the Beacon a mention was made of an attempted break in on the site, some of us were not aware of it until reading the article. It would be useful if anyone is aware of something similar happening to let other plot holders know – perhaps put it on the noticeboard – remember, prevention is better than detection.

In view of the fact that we have had new allotment holders and all the plots are allocated we should perhaps consider creating an Ivinghoe Allotments Association to create more of a community spirit – BBQs, plant swapping, sharing surplus produce – the list is endless! Ivinghoe allotments is much older than Pitstone allotments and just look at what they are achieving. If you are interested in joining together then please email Michelle at corr_michelle@yahoo.co.uk.

If anyone is interested in obtaining a plot having read about the first early potatoes then please contact Bridget Knight and she will give you all the advice and guidance you need. Please do not be put off if there is a waiting list

– without a list the Parish Council cannot assess the demand for plots.

Finally, a couple of dates for your diary: Ivinghoe Allotments will be open to the public on Saturday **17th August 2019 1.30pm until 4pm** so come along and see what we get up to! Also, **Saturday**

14th September 2019 is the **Ivinghoe Flower and Vegetable Show** and it opens at **2pm**.

Mind how you go...

Ernie Ivinghoe Allotmenteer



R.M.L.

Tree & Garden Services



- Tree Surgery & Felling
- Stump Grinding
- Hedge Cutting
- Landscaping
- Fencing

**FULLY
INSURED**Licenced
Waste
Carrier

Contact Robert on

Tel: **07585 007109**Email: rmlservices@outlook.comwww.rmltreeandgardenservices.co.uk

W Roff Agricultural Services

- Hay & straw for sale
- Paddock maintenance
- Fencing

**07909 680807**

ELSAGE FARM, CHEDDINGTON

IVINGHOE TURF

Suppliers of

- Turf
- Bark
- Topsoil
- Grass Seed
- Fertiliser

www.ivinghoeturf.co.uk**01296 661939**sales@ivinghoeturf.com**RGC**

Agricultural &

Horticultural Engineers

Mursley, Milton Keynes, Bucks MK17 0SA

**Tel: (01296) 720066**sales@rgcengineers.co.ukwww.rgcengineers.co.uk**Sales, Service & Repairs**

Garden Tractors

Chainsaws • Strimmers

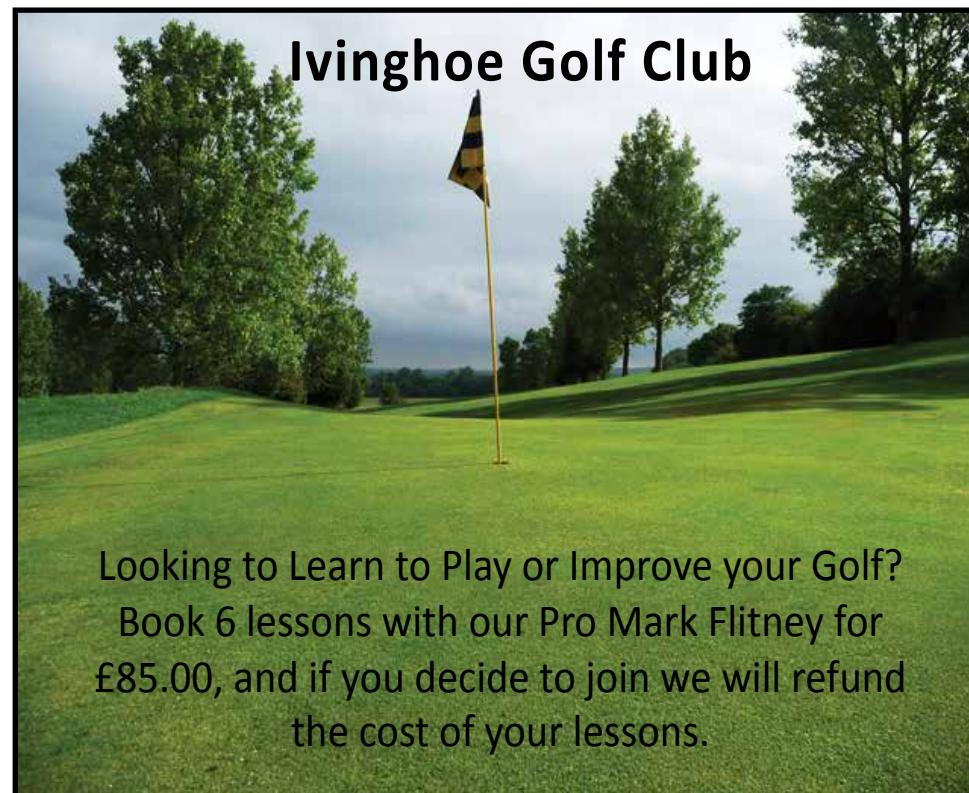
All Garden & Ground

Care Equipment

Compact Tractors, Quads etc.

Service & Repairs*to most leading
makes of machine.*

Ivinghoe Golf Club



Looking to Learn to Play or Improve your Golf?
Book 6 lessons with our Pro Mark Flitney for
£85.00, and if you decide to join we will refund
the cost of your lessons.

- Various Adult Membership schemes available starting from less than £8.00 per week.
- Junior Membership £99.00 or only £20.00 with a Parent holding 7 day Membership.
- Turn up and play Green Fees from £10.00 for 9 holes.

Discount Golf Shop with the largest
selection of equipment in the area



For further details contact:

Pro Shop: Tel: 01296 668696

Clubhouse: Tel: 01296 668696

E-mail: info@ivinghoegolfclub.co.ukwww.ivinghoegolfclub.co.uk

Looking for a
local Venue for
a Party?



Our Clubhouse is available for
private hire for birthdays and
celebrations.

Ivinghoe Golf Club, Wellcroft, Ivinghoe, Nr. Leighton Buzzard, Beds, LU7 9EF

Allotment Diary

Once again everyone is busy watering. The warm spring brought everything on early so the allotment plots are bursting with produce. I have never had such a good crop of sugar snap peas they climbed to over four feet and have been delicious. I have taken a chance and put all my gourds on one bed they are not as well protected but I am keeping fingers crossed badger and deer do not find them. I have already had several courgettes and marrows will be ready this week (although you are reading this in August the articles are submitted mid-July).

Alistair and Ran have worked wonders on their plot especially the "Hugelkultur" I can only describe this as a living compost heap, you can check it out on the net if you are interested or go and speak to Alistair. Ran has grown several Korean vegetables which are very interesting, one in particular, a salad plant a cross between mint and cinnamon whose leaves can be chopped in salad

or used like vine leaves to wrap meat to cook on a barbeque, she has given me one to try.

I am growing some African spinach as something new, but at the moment although it looks very pretty cannot decide whether to grow.

The spring blossom has produced a good crop of fruit on several of my fruit trees especially the Comice pear which has fruited for the first time, I am looking forward to those. Unlike last year when they struggled to get going the runner beans are doing very well, full of flowers and I have had my first pickings.

It would be nice if we could have some rain as the plants do so much better than with tap water, however I might have a different story to tell in the next issue.

Hope everyone has a wonderful summer and perhaps we will see you on the allotment open day.

Gloria



Keep the whole day Free

Sat Sept 14th 2019

Ivinghoe Fruit & Veg Show

Ivinghoe Community HUB

&

Ivinghoe Old Town Hall

Grow & Show

Full Schedule of Cookery,
Craft, Flower, Veg & Fruit
challenges on websites soon,
& further details
within the next Beacon/PPP

Ivinghoe & Pitstone's Windmill Pre-School

Windmill Pre-School in Ivinghoe is one of the top pre-schools nationally and highest rated locally

"Children make excellent progress in all areas of their learning and development because staff plan an outstanding range of activities..."

"Children have fun and are purposefully engaged in all areas of this dynamic setting. They make excellent progress as staff recognise them as unique individuals..."

Source: Ofsted report June 2011

Morning session: 9am-12pm
Afternoon session: 12pm-3pm (includes Lunch Club)
Lunch Club: 12pm-1pm (subject to availability)

We welcome all children between 2 and 5 years from Pitstone, Ivinghoe & surrounding areas to our purpose-built premises behind Brookmead School five full days per week

IT'S NEVER TOO EARLY TO REGISTER YOUR CHILD

For further info and to arrange a visit for you and your child please contact us:
 admin@windmillpreschool.co.uk or 01296 661031 (during sessions)

www.windmillpreschool.co.uk

Registered Charity No. 1032380



M. D. SPRING AUTOS
Martin D Spring
 28 years established trading



For all your vehicle's needs
Servicing, Class 4 and 7 MOTs on site, Exhausts, Welding, Tyres and Brakes

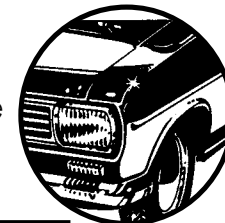
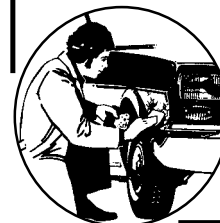
Your vehicle can be picked up and returned free of charge


Call now for a competitive quote

Telephone & fax: 01296 662280

Mobile: 07860 847328

Unit 9, Airfield Ind Est, Cheddington Lane
 Long Marston, Tring, Herts HP23 4QR





Brookmead School

Headteacher: Katherine Douglas

Bringing Learning to Life and Life to Learning

Our school is located in the beautiful Chiltern hills, which is something to be celebrated and shared. Established in 1967, Brookmead School provides a happy and stimulating environment that promotes an enjoyment and love of learning. We aim to enable all our children to reach their full potential, both as learners and as valuable members of our school and wider community.

Brookmead School is a Foundation Primary School for children aged 4 - 11 and serves the communities of Ivinghoe, Pitstone (including Castlemead) and Marsworth.

For further information or to arrange a visit please contact Mrs Kerr on 01296 668543 or email office@brookmead.bucks.sch.uk.

Brookmead School, High Street, Ivinghoe, LU7 9EX
www.brookmead.bucks.sch.uk

P. DYER ELECTRICAL

For all your Electrical & Testing & Inspection needs

- Re-wires
- Testing & Inspection
- Security Systems/Lighting
- LED & Low Energy Lighting
- Decorative Lighting
- PAT Testing
- Fuse Boards
- Fault Finding/Repairs

Fully insured, Part P registered, all work guaranteed.
 Fast, friendly, reliable, local electrician. For a free, no-obligation estimate, call Paul on:



Tel: 01525 222109
Mobile: 07850 682815



Ashridge Ramblings – The Beacons of the Past Project

The Chilterns Conservation Board has recently commissioned an aerial LiDAR (Light Detection And Ranging) survey of the hills. This can be used to see through the tree canopy and pinpoint previously unnoticed manmade structures which might be thousands of years old. The National Trust is a partner in the project and is looking for volunteers to help examine the archaeology hiding within the Ashridge Estate. A LiDAR Web Portal has been launched, which allows you to view the survey data, complete online tutorials and search for the tell-tale signs of earlier times. You will be able to trace over features which you think might be of archaeological interest, and your spots will be sent to the project's central database, where a team of trained volunteers will be checking what everyone is finding. Groups will then go out into the field to investigate sites identified by the survey. If you are interested in getting involved, please email Shona Waldron shona.waldron@nationaltrust.org.uk.

Tip-Off

There have been several instances of illegal fly-tipping of garden waste on the Ashridge Estate of late. It not only poses a hazard to the natural environment but is extremely unattractive and encourages others to do likewise. Garden waste often contains seed sources or root material of plants that can become invasive in the natural environment.

The Ashridge rangers and volunteers spend an enormous amount of time trying to remove invasive non-native plants that have become established here and which pose a threat to our native wildlife. Please support us by not fly-tipping garden waste and if you do spot any, please contact us.

Life in the Slow Lane

Whilst doing my Duke of Burgundy survey on the north slopes of the Beacon and Gallows Hill, I spotted the little fellow pictured below slithering out of his hidey-hole – then beating a hasty retreat. I hadn't seen a slow worm for a while, so went home and looked them up. To my surprise, I found that they can live 30-50 years – I would probably have guessed 5. So were he (or she) old, (s)he was born roughly when Neil Armstrong was taking his one small step. Should (s)he be young, King William may be in his eighties before slowly sloughs off his mortal coil.



Rikki Harrington



www.mbbka.org.uk

Local Beekeepers Need Your HELP! Honey Bee Swarms Are Very Important

Following the long winter of 2017-2018 and the late Spring, colonies of honeybees are under tremendous stress. In the wild the survival chance of a honeybee swarm is about 20%. Collected, and housed in a hive by a beekeeper, the survival rate triples. The MBBKA needs the help of everyone in the area to ensure we collect as many swarms this year as possible. If you see a swarm of bees please contact the MBKA on the swarm-line number below. We will send a beekeeper to collect the swarm and provide it with a new home.

Honey Bee Swarms: Swarms such as the ones pictured are merely Colonies that are in transition. Normally these Swarms are found hanging from tree branch, fence post or any place where the swarm can gather around the Queen while scouts are sent out to look for a more permanent home. A swarm left alone will only be in place from just a few minutes to a few hours and occasionally a few days. Generally, these swarms are very docile and the swarming Bees usually will not sting. Before Honey Bees swarm they gorge themselves with honey before leaving the hive. This makes it very hard for them to double over and sting.



What Causes Honey Bees to Swarm: Honey Bees have a natural instinct to create new colonies by swarming. They may also swarm through overcrowding or because an old queen is thought to be failing and they wish to raise a new one. Honey Bees usually swarm in early spring just as the colony is building up numbers in anticipation of the upcoming honey flow but swarming can happen through to late summer.

It is difficult to predict if weather conditions will lead to a large number of swarms in a particular year. MBBKA members attended nearly 100 calls to swarms last year and are on standby to collect throughout our area in 2018.

If You See a Swarm: The collection of swarms an important part of the work of bee keepers. You should never interfere with a swarm and pest control companies will not kill a swarm unless absolutely necessary.

Please contact:

MBBKA Swarm Hotline 07770370132

Brian Bush – Mid Bucks Beekeepers and BBKA Swarm Officer

BBKA British Bee Keepers Association website

<http://www.bbka.org.uk>



www.bbka.org.uk

Michelin Starred*****

Bowlers certainly enjoy their **bowling**, but as much talk can be about the quality of the meal provided by a club after a match.

We could name a few bowling clubs who are miserly with their food and who leave all the catering to a few ladies. This is not the case at **Cheddington Bowls Club**, where the men also muck in. Rodney's roast pork and Richard's herbed chicken are famed and set a standard few other clubs can match.

Bowls is not just about the great game itself, but about fellowship, fun and good food. You can't beat a great game of bowls followed by yummy food at £2 a head – *and that invariably includes a tasty pud +, if you want, a choice of beers and wines at very attractive prices!*

Bowls is a great value sport: a new bowler can join **Cheddington Bowls Club** for less than the equivalent of a £1 a week.

GIVE BOWLS A GO for FREE

Tuesdays 2pm and Fridays 6pm, (May to Sept.) or come and watch on a sunny afternoon.

Our fixtures are on our website: **Cheddingtonbowls.org.uk**.

Free car parking at the Recreation Ground, High St. Cheddington, LU7 9AA.

See you on the green soon,
love from Jack & Kitty – **01525 220644**



Ivinghoe health & fitness

- **Injury Rehabilitation**
(Sports or otherwise)
- **Personal Training**
(One-to-one in a small private gym)
- **Sports Massage**
- **Nutrition**
- **Treatments for Parkinson's Disease**
(Testimonials available)

Tel: **01296 662686**
Mobile: **07931 889112**
Email: **johnkinski@gmail.com**

The Studio
40 Station Road
Ivinghoe
Bedfordshire LU7 9EB

Women CAN Bowl...

Cheddington Bowls Club is supporting the **WOMEN CAN** campaign to encourage all you ladies to get active in a sport. Bowls is a great game and one where women hold their own against the men, both in skills and as mixed team members.

For fun, friendships and developing new skills, membership of a bowls club is great for the body and soul. Membership for new bowlers is under a £1 a week. Come winter, many members bowl Short Mat bowls in our clubhouse or Indoor bowls at Foxhill IBC in Aylesbury. We also have a varied socials programme.

GIVE BOWLS A GO for **FREE** on a Tuesday at 2pm or a Friday at 6pm



**WOMEN
CAN
BOWL**

(May-Sept), at The Recreation Ground High St Cheddington LU7 9AA. Casual wear and trainers is OK – we supply the rest.

MEN CAN too!!

Need more info: contact Tony and Rosemarie, tel: **01525 220644** or email: **cheddingtonbowls.org.uk**

((BOUNCE)) BOUNCEFITBODY.COM

((BOUNCE)) is mini-trampoline fitness; it is a dance-choreographed workout programmed to gain rapid results via HIIT training.

And classes are now in Pitstone! Classes are running at Pitstone Memorial Hall.

Mondays 6pm-7pm (child-friendly)
Wednesdays 9:30am-10:30am (child-friendly)
Thursdays 6:15pm-7:15pm

Book online here:
<https://bookwhen.com/bouncepitstone>

And follow us on Facebook for news and offers:
www.facebook.com/bouncepitstone

((BOUNCE)) is "the most effective exercise yet known to man." – NASA



Any questions? Contact Abi or Olivia:
bouncepitstone@gmail.com



Monday	9.30am	Wilstone Village Hall	Dance Mixx
	7.00pm	Cheddington Village Hall	Dance Mixx
Tuesday	9.30am	Cheddington Village Hall	Dance Mixx
	6.00pm	Wilstone Village Hall	Lo
Wednesday	9.30am	Wilstone Village Hall	Strength45
	11.30am	Nora Grace Hall, Tring	Lo
	7.30pm	Pitstone Memorial Hall	Express
	8.00pm	Pitstone Memorial Hall	Strength45
Thursday	9.45am	Wilstone Village Hall	Lo
Friday	9.45am	Wilstone Village Hall	Dance Mixx
Saturday	9.30am	Wilstone Village Hall	Dance Mixx

www.jazzercise.net/uk-aylesbury/tring-wilstone/

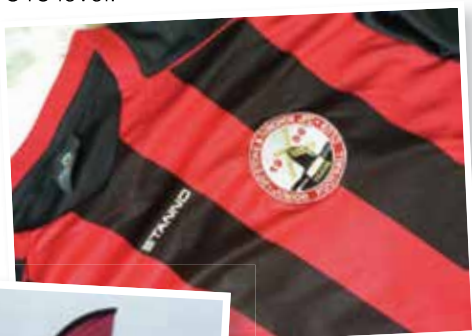
Contact Keri on 07900 987230 or email jazzercisebbh@jazzercise.net



Pitstone and Ivinghoe JFC U16s achieve the treble!

Pitstone & Ivinghoe JFC U16s have enjoyed a fantastic 2018-19 season, winning three separate competitions. Playing in the Wycombe & South Bucks League against teams spread around the home counties, including Bourne End, Risborough and Berkhamsted, they were crowned Division Champions, winning 14 out of the 16 league games. They also won the U16 Subsidiary Cup as well as the Aylesbury JFC 6-side tournament, sweeping Hemel Hempstead aside in the semi-final, and winning the final on

penalties against Ruislip Rangers. Playing their home matches at Pitstone Pavilion, over the course of the season they won 18 matches, losing 3, scored 100 goals and conceded just 23. A fantastic achievement for the 19 strong squad, some of which have played for their local Club since U6s, some 11 years ago. They look forward to playing in the South Bucks Youth League next season, which begins on Sunday 8 September, where they will be playing up an age group at U18 level.



Waste King in Local Football Sponsorship Deal

Members of the Pitstone and Ivinghoe girls' Under 15 football team and their manager, Barry Knight, with Waste King directors



While Phil Neville's England Lionesses are representing their country in the FIFA Women's World Cup, in France, Pitstone and Ivinghoe Junior Football Club is playing its part in helping to find the next – and subsequent – generations of international women's footballers.

In this, they are now being helped by Waste King, the specialist collections, clearance and recycling company that focuses on providing a highly environmentally friendly service, operates throughout the UK and draws its customers from both the general public and the commercial world.

Waste King recently signed a sponsorship deal for the 2019/20 season with Pitstone and Ivinghoe Junior Football Club's Under 15 Girls' Team, which includes Waste King providing the team's kit. The team's manager, Barry Knight, commented, "We feel proud that a local company is sponsoring us to develop girls' football locally."

Established only three years ago, the team plays in the Bucks Girls Football League. This involves playing more than 20 league matches each season, plus cup games at a competitive level.

"Most of the girls in the squad were new to football three years ago," said Barry Knight. "They're developing great resilience and team spirit – and very much enjoy learning and developing new skills, making friends and being part of the team."

"Women's football has never had a higher profile – with the current World Cup and the women's game becoming more professional than ever," he added.

"We're currently searching for more players, of all skill and experience levels – to expand our team squad. It's important to stress that all our coaches are FA-qualified and that we are a Charter Standard club."

For further details about Pitstone and Ivinghoe Junior Football Club and especially its female section, visit

www.pandifootball.net/under-14-girls

Waste King's managing director, Glenn Currie, commented, "My colleague, Andy Cattigan, and I formed Waste King 12 years ago because we were keen to 'do something to help the environment'. Serving both the commercial and domestic markets, we're now experienced at doing that – since we're able to recycle 98 per cent of every load of waste we collect."



Pitstone and Ivinghoe Junior Football Club



***Girls football teams under 13s & under 15s
school years 7, 8, 9 and 10***

***Want to have fun and fancy giving football a try?
Why not come along and join the fastest growing
sport in the world, girls football.***



**Contact us at
Chairman@pandifootball.net**



Leighton Plumbing & Heating



**Oil boiler servicing, repairs and
installations.**

**All other aspects of plumbing & Heating
undertaken.**

11 Woodman close
Leighton Buzzard
Beds.
LU7 3nu

**Please see our reviews and pricing on the
boiler juice / myboilerservice website.**

01525 385250 / 07774567472

Oftec registered & Insured Leighton-plumbing@ntlworld.com

Looking to visit Canada...



Travel Impressions and Prestige Holidays
cordially invite you to our exclusive
Canada and Alaska event



Join us on **Tuesday 1st October** from **6pm-8:30pm** at the
Baptist Church in Tring High Street to learn more about these
wonderful destinations and receive advice to help plan your trip.

Spaces are limited so please call on **01442 890265**, or email
enquiries@travelimpressions.co.uk to book your place.



Travel Impressions
A World of Experience

EST. 1982
PRESTIGE
EXCURSIONS



Holland America Line
SMOOR THE JOURNEY

01442 890265 • enquiries@travelimpressions.co.uk • www.travelimpressions.co.uk

Suite 4, George House, 64 High Street, Tring, Herts. HP23 4AF

Councillor News from Anne Wight



Anne Wight

Bucks County Councillor, Ivinghoe Division

I hope everyone is making the most of the warmer summer weather in Ivinghoe Division.

I'm sure you may have noticed that the Temporary Traffic Regulation Order (TTRO) is now on the Brownlow Bridge in Ivinghoe, and so vehicles over 18 tonnes should not use the bridge.

While I know this is causing difficulty particularly for our farmers and some local businesses, unfortunately the issue is one of public safety as we have been advised by the Canal and River Trust—who own the bridge—that their structural analyses indicate that the bridge is too weak to handle vehicles over 18 tonnes.

As this is a temporary TRO limit on the bridge, the Freight Strategy team at Bucks County Council is now in the process of looking at traffic flows through the surrounding villages, and will also take into consideration resident and business views on the 18 tonne weight limit over the coming months before deciding whether to make the 18 tonne limit permanent, or whether to discuss the possibility of reinstating the bridge for vehicles over that weight.

If you have a view on this issue either way, please write to the Freight Strategy team at the email address below to make sure your view gets counted.

freight@buckscc.gov.uk

The new Buckinghamshire Council

I was pleased to have attended the first meeting of the Shadow Authority for the

new unitary Buckinghamshire Council on 3rd June. The Shadow Authority consists of all district and county councillors for Buckinghamshire. Its main duty is to ensure a smooth transition to the new council by 1 April 2020. Its key responsibilities include setting a budget for the new Buckinghamshire Council and appointing members to committees. At the first meeting, we elected a Chairman, Councillor Richard Scott, and a Vice Chairman, Councillor Peter Strachan, to the Shadow Authority and also agreed the constitution for the Shadow Authority.

The Shadow Authority has now also confirmed the membership of the Shadow Executive, which will consist of 17 members from across the five existing councils who will take key decisions needed to create the new council over the coming year. It met for the first time on June 11th. The Leader of the new Shadow Executive is Martin Tett, Leader of Buckinghamshire County Council and Katrina Wood, Leader of Wycombe District Council was appointed as Deputy Leader.

Under the constitution that was agreed, the Shadow Authority will also establish a cross-party Overview and Scrutiny

Committee, with councils nominating a specified number of councillors in accordance with political balance.

The Committee's main role will be to scrutinise and have overview of the budget and the transition to the new council, although other matters may be referred to the committee. Further details on scrutiny arrangements can be found in the Constitution document on the Shadow Authority website.

Full details of the Shadow Authority and Shadow Executive, including dates, agendas, webcasts and records of public meetings can be found at **shadowbuckinghamshire.gov.uk**.

While there is a lot of work ahead to ensure that key senior staff appointments are made and to set the budget for the new council before it comes into effect on 1 April, 2020, there is great enthusiasm on the part of all of us councillors who are now looking ahead to some of the advantages which the new unitary council will bring in terms of savings and efficiency. I will continue to keep residents informed of developments as we move towards the new unitary Buckinghamshire Council.

Transport for Bucks update

I am sure that everyone will be delighted to hear that we have got funding for more weed spraying this summer. BCC currently carry out herbicide treatment of noxious weeds, primarily Japanese Knotweed and Rag Wort, throughout Buckinghamshire. These sites are on our noxious weed site registry and are now plotted on our 'Confirm' data base for annual programmed visits. Herbicide application occurs three times a year. Established Knotweed sites in particular

can take up to 3 years to eradicate. We have also secured funding to carry out cyclical herbicide treatment during 2019 on all priority 1 and 2 footways across Buckinghamshire. This has started with completion due in October 19.

Work on road surface improvement schemes identified by Local Area Technicians in conjunction with local members commenced in April and the first phase of works is planned to be completed in June. A second and final phase of works is due to be carried out in August and September. The reinstatement of road markings and road studs will also be actioned to coincide with the delivery of the surfacing work. The part of Cheddington High Street near the tennis courts towards Cooks Wharf is also going to be resurfaced as part of the Capital Maintenance Program scheme.

This quarter TfB completed quite a few road improvement Plane and Patch schemes in Ivinghoe Division, including the whole length of the roads of Pebblemoor in Edlesborough, Eaton Bray Road in Northall, Mentmore Road in Mentmore, and Crafton Lodge Lane in Crafton. At the recent Local Area Forum meeting, parish councillors across our division mentioned how the Plane and Patch works are high quality and prevent the development of "pothole farms" in whole areas of the road surface.

On the back of 'Plane & Patch', the Government has released an additional £4.6M to Bucks County Council and Transport for Buckinghamshire to spend on highway repairs. The funding can be used to repair areas of potholes, road defects, bridges and the local highways infrastructure generally and will be spread across the County. ►

We are very fortunate to be able to have some extra surface dressing between the Canal Bridge near the Red Lion and the county boundary around Lower End in Marsworth. The idea behind this surface dressing is that we surface dress over the patching completed in 2018 to reduce the need for reactive maintenance in the future. Hopefully, that work will be completed by late July/early August.

As for grass cutting across the county, BCC manage a total area of 9,948,148 million M2 of rural grass across Buckinghamshire. Our 2018 rural grass-cutting programme was carried out on budget and to time. Our main focus on highway verges is around areas that are key to maintaining visibility, such as at junctions, laybys, and the inside of bends. The aim of grass-cutting is to keep the highway safe by maintaining visibility for all road users. We carried out 4 cuts throughout 2018 consisting of 3 visions splay / junction cuts and a single swath cut, 1.2m (48") wide from the edge of the carriageway or footway which was completed in October as per the program.

This program is designed to maintain the necessary sightlines and vision splays at junctions. Based on the effectiveness of last year we are proposing to continue with this methodology for the 2019 season with the addition of a full width cut on both A and B strategic routes. This is designed to keep encroaching vegetation in check before it reaches a size/ diameter that our conventional flailing machines are capable of cutting

Unfortunately, we recently learned that the Vale of Aylesbury Housing

Trust took the sudden decision to stop grass cutting for areas around Aylesbury Vale which they had historically been cutting. This has had severely adverse effects in Pitstone in particular and I am very conscious of the difficulties and inconvenience this has caused residents in Glebe Close and Yardley Avenue, as well as in other areas around the division. When I learned of this, I emailed Cllrs Steven Lambert and Angela Macpherson, who are on the board of VAHT, and explained the severely negative impact this was having on my residents. They were then able arrange for an additional two summer cuts by VAHT during the transition period. Going forward, Bucks County Council is currently in discussions with VAHT to discuss the reallocation of grass cutting for these areas. I will keep my parish councils informed as to developments.

Mental Health Awareness Week in May

I would just like to say that I was pleased to have been able to participate in Mental Health Awareness Week in May, both by manning our lift lobby stand at county hall and by attending our staff mental health awareness picnic in the park. I am privileged to be both a Time to Change Champion as well as a mental health champion at Bucks County Council. Time to Change is all about reducing the stigma associated with mental illness through encouraging people to share the stories of their personal experiences and journeys through mental health issues. In my own case I suffered badly from post-natal depression after my first baby, and I know from firsthand experience

how difficult it can be to try to cope with depression until finding treatment options which are effective. Since this year around one in four people will experience a mental health problem, we hope that by actively promoting discussion about mental health experiences, we can ensure that everyone feels confident and comfortable enough to approach a friend, their GP, or any of us Time to Change champions so that we can listen and signpost them to the right places to get treatment.

For more information on **Time to Change**, please have a look at the website link: <https://www.time-to-change.org.uk>

CyberCrime and how to Stay Safe

Finally, one issue I know which is of concern to many of my residents is the growing problem with cyber crime, phone scams and phishing emails. I thought I might take this opportunity to mention a few things you can do to keep yourself and your families safe from this growing threat to our communities.

While many of us are familiar with call blocking on our mobile phones, not everyone may have invested in a landline Call Blocker device with caller ID. While the call blocking service is also available through BT and Virgin Media, as well as on certain landline phone sets, it is also possible to buy one of the CPR Call Blockers which is recommended by the police to try to ensure that residents are not troubled by phishing phone calls. This can be especially helpful for elderly residents living alone who are particularly vulnerable to phishing and hard-sell scammers.

If you are not sure whether a caller is genuine or not, you can make a note of the number from the Caller ID or after hanging up simply by using the 1471 service. At that point it is helpful to enter the number into the Who Called Me online phone number check at the link below. This will let you know whether others have complained about this phone number, or whether it is a scam and what experiences others have had with it. There is also a listing of the number as being Dangerous or Neutral, and it is well worth checking if you are not certain that the caller might be genuine, or to help you decide if you want to ring the number back. <https://who-called.co.uk>

If you receive phishing emails or scam spam, you can forward them directly without clicking on any links to the UK's online police team, Action Fraud, at this address: NFIBPhishing@city-of-london.pnn.police.uk

There is also a special team for businesses specifically where 24/7 online crime reporting can be handled separately to that of residents, along with news articles about the latest scams and what to look out for, as well as a live chat option if you need advice or guidance and information on victim resources.

If you are a business, charity or other organisation which is currently suffering a live cyber attack (in progress), please call **0300 123 2040** immediately. This service is available 24 hours a day, 7 days a week.

If you are member of the public you must call to report through the core opening hours below.

Specialist advisers are available by phone:

- Monday – Friday 8am-8pm
- Saturday – Closed
- Sunday – Closed

You can report fraud or cyber crime to Action Fraud **any time of the day or night** using the online reporting tool on the website. You can also report and get advice about fraud or cyber crime by calling **0300 123 2040**.

The times above represent Action Fraud's core contact centre opening hours, although from time to time they do extend the service provided.

Action Fraud will not call you unless you have requested them to, and will never ask for your bank details. If you are unsure whether a call is genuine, call the Action Fraud team on **0300 123 2040**. Please note this number will be charged at your normal network rate.

If you have inclusive minutes within your mobile tariff then calls to the Action Fraud number are included at no cost.

If you have used all of your inclusive

minutes then the call will typically cost 35p per minute depending on your network provider.

Please do visit the website for more information at **<https://www.actionfraud.police.uk>**

Remember to also use different passwords for each of your various social media, utility, banking and any other online accounts. That way if one of your accounts were hacked, the hacker would not be able to access any of your other accounts automatically. Strong passwords should be more than eight characters if possible, and use a combination of upper case, lower case, symbols and alphanumerics. Never give your passwords to friends or say the full password over the phone, most genuine companies now ask for only for a few of the letters of your password over the phone, such as the 2nd, 6th or 10th alphanumeric in the password.

Anne Wight



Let's age well together

Keeping active is a fantastic way to make new friends and help keep our health in check.

Active Bucks has a collection of fun, introductory physical activity sessions available to help us age well together.

For hundreds of activities to keep fit and healthy visit:

www.activebucks.co.uk
or call **01296 585842**



From District Councillors Sandra Jenkins and Derek Town

AVDC elects last chairman (15 May 2019)

Aylesbury Vale District Council elected its last chairman – Cllr Judy Brandis – whose term of office will end with the establishment of the new unitary Buckinghamshire Council in May 2020.

At the same meeting Cllr Chris Poll (previously Cheddington Parish Council Chairman) was elected vice chairman. Cllr Brandis has served as a district councillor, representing Haddenham and Stone, for 20 years and has been chairman of Licensing for over 12 years. Previously, she ran her own children's nursery near where she lived in Amersham, before moving to Haddenham. Cllr Brandis said: "It is an honour and privilege to have been elected as the district's last chairman and I am looking forward to working with people, community groups and other organisations from across the Vale. In my role as chairman I hope I will be able to help them raise their profile and let others see the magnificent work they all do to contribute to the life and vitality of the area".

Cllr Brandis has nominated Nest Aylesbury Vale as her charity for the year. Formerly known as Home-Start Aylesbury Vale, Nest is a local independent charity that has been supporting families, with one child under five, throughout Aylesbury Vale for over 16 years. Nest provides carefully selected volunteers, with parenting experience themselves, who will regularly visit a family in their own home, offering emotional and practical support through



difficult times for as long as it is helpful or needed. This friendly and accessible parent-to-parent support is a simple yet effective way of enabling families to get back on track. "Unfortunately even a largely volunteer led organisation needs funds, and Nest is no exception. They are a vital resource for ordinary families going through extraordinary times and I am looking forward to working with them and others across the Vale promoting their work and organising and supporting a range of fundraising events", said Cllr Brandis.

Update of The Vale of Aylesbury local plan

VALP LOCAL PLAN 2013-2033
EXAMINATION Inspector Paul Clark BA MA MRTPI AVDC has advised the Inspector that it will have prepared modifications to the plan together with an updated Sustainability Appraisal by the end of June 2019. These will be submitted to the Inspector for him to be reasonably satisfied at that point that the proposed

modifications are necessary to rectify the unsoundness problems that have already been identified in the examination hitherto. Once the Inspector is reasonably satisfied on that point, the modifications will be published by the Council to give the public an opportunity to make representations on them. This is expected to take place for at least six weeks towards the end of the summer. Representations should confine themselves to new matters raised by the modifications; a simple repetition of representations previously made does not assist the process. The Inspector is likely to consider the new representations made in the autumn of 2019, following which he will issue his final, binding, report.

Local Democracy

As we previously mentioned our local elections will now take place next May 2020. The elections were due to take place this May but because the decision to put in place a new Unitary Council these have been put back until May 2020 with the resultant reduction in the number of councillors.

The Thames Valley Police and Crime Commissioner elections will also take place in 2020. The present Commission Anthony Stansfield who was elected in 2012 is standing down. All information on the Police and Crime Commissioner's role and responsibilities can be found on the website.

Unitary

This is a golden opportunity to transform all service provision in Bucks and we're encouraged that the Minister for Local Government has reaffirmed that the new council will not be a continuation of any existing authority, but a completely new start. We are all keen to play our part in

ensuring that this new council delivers excellent services and improved outcomes to the communities we serve.

Local government in Buckinghamshire is facing the biggest change in a generation as the five existing councils – Aylesbury Vale, Chiltern, South Bucks and Wycombe district councils and Bucks County Council – prepare to be abolished in 2020 and replaced with a brand new 'unitary district' council. This means just one council providing all council services in Bucks.

This is a golden opportunity to transform all service provision in Bucks – the new council will not be a continuation of any existing authority, but a completely new start. We are all keen to play our part in ensuring that this new council delivers excellent services and improved outcomes to the communities we serve.

AVDC successfully prosecutes three drivers for 'blagging'

On Friday 28 June 2019, Aylesbury Vale District Council (AVDC) successfully prosecuted 3 drivers for illegally plying for hire (blagging) at Milton Keynes Magistrates Court. The cases were bought before the court following an enforcement operation carried out by officers from Aylesbury Vale District Council in November 2018.

These drivers were operating private hire vehicles licensed by AVDC accepted journeys by council officers who were acting as members of the public. From one destination to another in Aylesbury that were not pre-booked via their operator. This in turn meant that it invalidated the insurance for the vehicle as the policy in place only covers the vehicle for journeys that were pre-booked.

Fayaz Ali Ghumro of Cambourne ►

Avenue, Aylesbury attended Court and pleaded guilty to plying for hire and driving without motor insurance committed on 03 November 2018. He was fined £146 for plying for hire, £440 for no insurance, given 6 points on his DVLA licence and also has to pay £200 costs and a charge of £44. Raja Sajid Kiani of Meadowcroft, Aylesbury attended Court and pleaded Guilty to plying for hire and driving without motor insurance committed on 03 November 2018. He was fined £140 for plying for hire, £420 for no insurance, given 6 points on his DVLA licence which resulted in the loss of his DVLA driving licence due to exceeding 12 points on his licence. He also has to pay £200 costs and a charge of £42. Amir Yasin of St Edmunds Close, Aylesbury failed to attend Court however had pleaded Guilty to plying for hire and driving without motor insurance committed on 03 November 2018. Mr Yasin is awaiting sentencing at a later date.

The Council will now consider action regarding their Private Hire / Hackney Carriage driver licences.

Councillor Susan Renshell, Chair of AVDC's Licensing Committee, said: "Unlawfully plying for hire is a serious offence. Apart from taking legitimate work from licensed hackney carriages whose livelihood depends on picking up passengers, it impacts significantly on public safety. The effect of unlawfully plying for hire is that it invalidates the drivers' insurance and may leave customers and third party drivers without financial redress in the event of an accident. These drivers must take responsibility for the safety of the passengers they carry in licensed vehicles.

Aylesbury Vale District Council will continue these operations to ensure compliance with the law in a bid to eradicate illegal plying for hire in our district.

Environmental Health Officers track down unregistered microbladers

Aylesbury Vale District Council (AVDC) Environmental Health Officers have been tracking down unregistered providers of increasingly popular microblading services in Aylesbury Vale. Businesses and practitioners need to be registered with the local authority – in the same way that you need to be licensed to carry out any other skin piercing services, including tattooing, cosmetic piercing, ear piercing, electrolysis and acupuncture. If you are a business or practitioner that hasn't done this already, you can quickly and easily register via the AVDC website: <https://aylesburyvaledc.gov.uk/tattooing-piercing-electrolysis-and-acupuncture>. Unregistered microblading service providers risk being prosecuted.

If you are a customer, you should only use registered practitioners, as this will give you the confidence to know that they have been trained by an approved training provider, that they have valid insurance in place, and that they follow safe working practices and effective infection control procedures to limit the spread of infections that might range from mild irritations to the much more serious Hepatitis C.

Microblading is a technique similar to tattooing that is performed on the eyebrows to give a thick, natural look – or whatever the client desires. A small, handheld tool with 10-12 needles at the end is used to scratch the surface of the skin. Medical grade pigment is implanted using lightweight strokes to create the look of natural hair. It is unlike tattooing as it is not in the deeper layer of skin, and it is also not permanent – the colour fades within 18 months.

Councillor Sir Beville Stanier, Cabinet Member for Waste and Licensing, said:

"It is vitally important that all premises and all practitioners offering any cosmetic or other services that pierce the skin are registered or licensed with AVDC. This not only protects them and their business, but it also gives customers confidence that they are using properly trained and insured providers who apply effective infection control procedures.

"We are concerned that there may be practitioners who have come to microblading from other procedures, such as eyebrow tinting or threading, who do not appreciate the need to be registered if they now offer this service."

AVDC Environmental Health Officers believe they have tracked down all unregistered microblading providers, but are calling on local residents to contact them if they are aware of anyone offering microblading or other procedures that isn't registered or licensed, or if they have any other concerns about services being offered. You can contact AVDC on **01296 585858** or go to www.aylesburyvaledc.gov.uk/complaints

Our membership responsibilities for 2019/2020

Sandra Full Council

- Chairman of the Living and Environment Scrutiny Committee
- Economy and Business Development Scrutiny Committee
- Bucks Playing Field Association
- Bucks Health and Adult Social Care Select Committee

Derek Full council

- Development Planning Committee
- Audit Committee
- New Homes Bonus Panel
- Substitute Member for Strategic

Planning Committee

- NB planning and Licencing committee member are obliged to take training every year to qualify.

Going Forward – the Challenges

1 There is going to be difficult planning decisions to be considered due to the expansion of housing development in the Vale of Aylesbury. There is also the adequacy of the infrastructure to support the new developments.

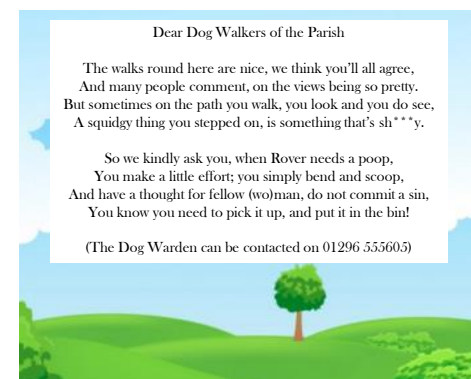
2 This year will be a year of change due to the new Unitary Buckinghamshire Council being established in a relatively short time span.

3 Ensuring AVDC's service provision is maintained during the process move to the single unitary council

Derek Town – 01296 661637
dtown@aylesburyvaledc.gov.uk

Sandra Jenkins – 01296 668587
sjenkins@aylesburyvaledc.gov.uk

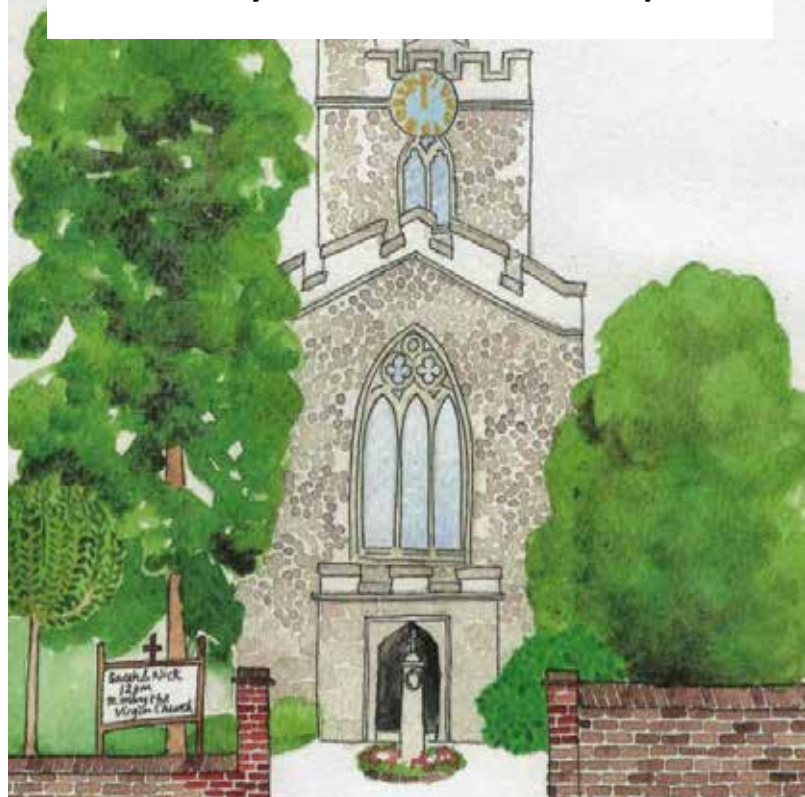
District Councillors for Pitstone and Cheddington Ward



Music-a-thon

A day of continuous singing and music
At St Mary's Church Ivinghoe

Saturday 19th October 10am to 5pm



Raising funds for the oldest building in Ivinghoe village

Refreshments available throughout the day

Lunches available 12noon to 2pm

If you would like to take part or come and support us we would love to see you.

For further information please email or telephone **Sandra Green:**

sandragreen20@hotmail.com 01296 668648

Your local Councillors:

Cllr Karen Groom

Areas of Responsibility: Allotments, Beacon Magazine, Beacon Villages Library, Conservation Area, Footpaths and Bridleways, Parish Maintenance, Ivinghoe Aston Village Hall, Lawn Hire, Lawn and Trees, National Trust/Chiltern Soc., Planning
Add: Willowdene Farm, Ivinghoe, LU7 9EA
Tel: 01296 668326 or Mob: 07882 3562411
Email: karengroom@hotmail.co.uk



Cllr Pat Roach

Areas of Responsibility: Health, Community Impact Bucks Liaison, General Parish Maintenance, Lawn and Trees, Local Area Forum
Add: Church View, Church Road, Ivinghoe LU7 9EU
Tel: 01296 668482
Email: p.g.roach@hotmail.com



Cllr Claire Bamber

Areas of Responsibility: Conservation Area, Human Resources (Clerks employment and training), IPC Website and Social Media (inc Facebook and Twitter), Planning Sub-Committee, Police Liaison, Streets, Street Lights and Highways (inc Traffic Calming), Grants and Fundraising
Add: Bruce Grove House, Great Gap, Ivinghoe, LU7 9DZ
Tel: 01296 668134 or Mob: 07711 107 114
Email: claire.bamber@btinternet.com



Mrs Bridget Knight

Clerk to Ivinghoe Parish Council
Add: Parish Office, Ivinghoe Town Hall, High Street, Ivinghoe, Bucks LU7 9EP
Tel: 07960 605393
Email: ivinghoechurchclerk@gmail.com



Cllr Andrew Dicker

Areas of Responsibility: Allotments, Finance
Add: The Old House, 38 Station Road, Ivinghoe, LU7 9EB.
Tel: 01296 668444
Email: andrew.dicker31@gmail.com



Cllr Anne Wight

Bucks County Councillor
Ivinghoe Division
Add: 31 Redwood Drive, Wing, LU7 0TA
Tel: 01296 682955
Email: awight@buckscc.gov.uk



Cllr Stephen Lott

Areas of Responsibility: Beacon Villages Library, Footpaths and Bridleways, Ivinghoe Aston Village Hall, Lawn Hire, Local Area Forum, Playgrounds (Ivinghoe and Ivinghoe Aston), Police Liaison, Town Hall Committee
Add: 2 Yew Tree Close, Ivinghoe, LU7 9ET.
Tel: 01296 668897
Email: slj@linley-lott.me



Cllr Sandra Jenkins

Tel: 01296 668587
Email: sjenkins@aylesburyvaledc.gov.uk



Cllr Anna Stone

Areas of Responsibility: Education, Footpaths and Bridleways, Town Hall Committee, Grants and Fundraising
Add: Willowdene Farm, Ivinghoe, LU7 9EA
Tel: 01296 668326
Email: annastone92@hotmail.co.uk



Cllr Chris Poll

District Cllr Edlesborough Ward
Add: 43 Gooseacre, Cheddington LU7 0SR
Tel: 01296 663 737
Email: cpoll@aylesburyvaledc.gov.uk



Cllr Sheena Bexson

Areas of Responsibility: Community Impact Bucks Liaison, Planning sub-committee, Play Areas (Ivinghoe Aston & Ivinghoe), Streets, Street Lights and Highways (inc Traffic Calming).
Email: SBexson@automotive-property.com



Cllr Derek J Town

Tel: 01296 661637
Email: dvtown@aylesburyvaledc.gov.uk





PITSTONE COMMUNITY CAR SCHEME

**CAN YOU HELP
SUPPORT THE
LOCAL
COMMUNITY?**

**COULD YOU
DRIVE SOME OF
OUR RESIDENTS
TO MEDICAL
APPOINTMENTS?**

**LIMITED LOCAL TRANSPORT DOES NOT PROVIDE RESIDENTS
WITH ACCESS TO VITAL HEALTHCARE APPOINTMENTS**

PLEASE JOIN US AS A VOLUNTEER DRIVER

- ALL YOU NEED IS YOUR CAR, A DRIVING LICENCE AND A FEW HOURS A MONTH TO OFFER SOMEONE LOCAL A LIFT
- YOU CAN DRIVE AS LITTLE OR AS OFTEN AS YOU LIKE
- IT DOESN'T AFFECT YOUR INSURANCE
- MILEAGE EXPENSES ARE PAID

For more information or to volunteer:

**Please leave a message with Stephen on 01296 767116 or email
communitytransport@pitstone.co.uk**