



Ivinghoe Beacon Magazine

Issue 104

70 pence where sold



Inside this Issue:

- Welcome From the Chair
- Rural Crime Update
- Jazzercise for Epilepsy Society



The Quarterly Magazine
of Ivinghoe Parish Council

The Beacon Team...

The Beacon Magazine would not reach your door without the kind help of the volunteer band of distributors.

Many thanks to them all; Andy Beezer, Les Hyde, Pat Roach, Geoff Travis and Rob and Anne Cattle – it couldn't be done without you!

If you have any skills that will help us to keep the magazine going or you would like to submit an article, please let us know as we are always looking for new and varied talents!



Editor: Bridget Knight

Tel: 07960 605393

Email: ivinghoeaparishclerk@gmail.com

Advertising Manager: Bridget Knight

Tel: 07960 605393

Email: ivinghoeaparishclerk@gmail.com

Design & Artwork: Laila Palfrey

Tel: 01525 222214

Email: laila@breezdesign.co.uk

CONTENTS

Welcome from the Chair	3
Neighbourhood News	6-21
Ecumenical Enlightenment	24-27
Cultivation Clippings	28
School Stuff	34-35
Beyond the Boundary	36-37
Sporting Scoop	40
Councillor Communication	44-51

BEACON COPY AND ADVERT DEADLINES

We aim to get the magazine distributed around the beginning of every February, May, August and November. To ensure your article or feature makes the edition you would like please see the submission deadlines below:



May 2018 Edition – 4 April 2018
August 2018 Edition – 4 July 2018
November 2018 – 4 October 2018
February 2019 Edition – 4 January 2019

BEACON MAGAZINE ADVERTISING RATES:

1/4 page	£58 per year
1/3 page	£65 per year
1/2 page	£95 per year
Full page	£130 per year

NB: Rates are for 4 editions.

Artwork must be supplied as a jpeg or a pdf file.

Welcome from the Chair

Firstly, Happy New Year to everyone from myself and the Councillors.



Karen Groom,
Chair, Ivinghoe
Parish Council

Roads

I hope by the time you read this the Anglian Water roadworks by Cheddington Station will be completed after some inconvenience to us all. We are expecting to have an update from Bucks CC regarding the costings and the safety audit for the BHB Pitstone and Ivinghoe Traffic Scheme shortly.

Ivinghoe Lawn Hire

Following the severe weather, we have had to restrict parking on Ivinghoe Lawn to preserve the grass and protect the conservation area from damage.

Beacon Magazine Advertising

Following an increase in printing costs and a few advertisers being slow to pay we are asking for advertisers to pay for their adverts in advance. We thank our advertisers for their support.

Telephone Boxes

The redundant telephone boxes in Ivinghoe and Ivinghoe Aston will be removed shortly.

Ivinghoe Lawn Railing Project

The council has obtained quotes for new railings and applied for funding from AVDC New Homes Bonus, this is planned for the spring. The new railings will be

very similar to the ancient, damaged railings and will enhance the area.

Defibrillators

The British Heart Foundation have approved a grant for the Ivinghoe Aston Defibrillator and will part fund this with Ivinghoe PC paying the balance. The Ivinghoe & Pitstone WI are funding a defibrillator for Ivinghoe. Suitable locations in both villages will be decided and the defibrillators will be installed soon.

Beacon Magazine

The council is seeking your views on whether you still require a printed version of this magazine. As you may be aware issues are available to view through our website. If you have an opinion, please share this with us by email ivinghoeaparishclerk@gmail.com or you can drop us a line using the Ivinghoe PC post box which is located in Ivinghoe Town Hall by the library.

Website

Please check the website for regular updates: www.ivinghoeorg.uk

BEACON COMMUNITY CHOIR

10TH ANNIVERSARY YEAR

In order to celebrate the Beacon Community Choir's 10th anniversary year, they will be performing two exciting works by two well known and loved composers.

ZIMBE! COME SING THE SONGS OF AFRICA

Alexander L'Estrange's phenomenal fusion of traditional African song and jazz, Zimbe! is at times touching and moving, at other times funky and grooving but always incredibly up-lifting.

PICTURES AT AN EXHIBITION

With Lyrics and Music newly written and Composed by John Cameron, Pictures at an Exhibition 2018 is a new take on the well-loved Mussorgsky Suite, taking inspiration from an eclectic choice of 19th, and 20th Century works. The variety of artistic styles is matched with a kaleidoscope of musical genres, from ethnic to rock, jazz to rap to a capella choir. As Mussorgsky's composition, some movements are linked by "Promenades", but this time jazz flavoured, with increasingly unsettling time signatures.

Both works will be performed by Beacon Community Choir, will feature the Children's Choir from Brookmead School, and will be accompanied by Jazz Quintet.

If you would like further details, please contact:
judithclaresheridan@gmail.com

Beacon
community choir

Have you ever thought about 'growing your own'?

Growing your own fruit and vegetables can be a very satisfying experience and in Ivinghoe we are very lucky to have some beautiful allotments just off Church Road, overlooking St Mary's Church.

If you are an Ivinghoe resident and would like some more information about availability of plots - we have them in a range of sizes - please contact the Parish Clerk at ivinghoeclerk@gmail.com

NB: there may not always be an available plot but we do keep a waiting list!



Explore... Dream... Discover...



Travel Impressions are specialists in tailor-making holidays to destinations worldwide. If you are thinking of travelling to Canada, USA, Australia, New Zealand, Southern Africa, South America, Asia, India, Sri Lanka, China, Japan or within Europe, please call or email us.

We can help you create the best itinerary, as we offer:

Personalised planning - we take the time to get to know you

Friendly, honest advice from an independent travel agency

Extensive experience to arrange every detail

Using fully bonded tour operators • No booking fees

Travel Impressions

A World of Experience



01442 890265

enquiries@travelimpressions.co.uk
www.travelimpressions.co.uk

Suite 4, George House, 64 High Street, Tring, Herts. HP23 4AF

RikkIAbout

The Ivinghoe Aston Broadband Group says 'thank you'

Thanks to everyone who contributed to our recent broadband survey. We've had a fantastic response and the data will be vital in securing the right super-fast broadband service for our village. More than 80% of respondents said they were unhappy with their current service and over 90% said they would be interested in high speed broadband. You can download a copy of the survey from http://liamhall.net/IABG_Survey_Results.pdf. It is also available via the Ivinghoe Aston Facebook page and a hard copy will be available to read over a pint at The Village Swan. Despite being left behind and ignored by the major internet service providers there are several options open to us a community. In the coming weeks we will analyse each of these and speak to the suppliers. We will then get back in touch with you to choose the best option. Watch this space!

Nobody expects the IA inquisition – Lady of the Dance

Taira Foo has single-mindedly followed her dreams. Keen on dancing from an early age, she didn't realise until she was 17 that she could turn her passion into a career. For some that might have been too late or too tough, not so for Taira.

Rikki: What made you realise that dancing could be your professional life?

Taira: I was extremely fortunate to attend a ballet academy in Derby, where I hail from, run by Eve Leveaux, to whom I was introduced by a visitor to my school. She



was herself trained by the great Polish-born dancer and teacher, Dame Marie Rambert. I was 17, and training with 7-year-olds, but Eve gave me the confidence that I needed to progress.

Rikki: Was there a "big break" that catalysed your career?

Taira: In 2002, I was part of the original West End cast of We Will Rock You. I also danced in Chicago.

Rikki: (showing off his tremendous knowledge of musicals) Wow, which musical were you in there?

Taira: No, I was in the musical called Chicago!

Rikki: Returning to We Will Rock You, I was a great fan of Queen, did you meet them?

Taira: Yes, Roger Taylor and Brian May in particular (Freddie had died by then). I also danced at the Party at the Palace, celebrating The Queen's Golden Jubilee, where Brian May famously played Queen's version of the National Anthem on the roof of Buckingham Palace.

Rikki: More recently you have got into choreography. How did that come about?

Taira: I was asked to choreograph a youth event and I loved it. I really enjoy creating new ideas in dance and have set up my own company, the Hinged Dance Company. I am currently working on a piece called Flowers in December, which is about the refugee crisis in Syria.

Rikki: Do you come up with the ideas and work them right through from conception to production?

Taira: Yes, pretty much. Sometimes I use existing music, but sometimes I have the luxury of being able to commission music. That was the case for my production Prisoner 466, about Nelson Mandela. John Cameron, whom you have previously interviewed for this column, wrote the piece Sharpville for that.

Rikki: How did you come to live in IA?

Taira: The usual thing – London was too expensive and I looked around. For whatever reason, IA kept coming up in searches, so I visited, fell in love with it and moved in.

Rikki: Can Ketts dance? (I must admit that I was hoping for some good stories of valiant ineptitude here, but....)

Taira: Yes, he's very good. He shone in the "Strictly" take-off that we ran for charity here a few years back, and he used to be one of the Chippendales.

Taira has recently published a book Pocket Guide for Dancers charting her story. Its aim is to encourage dancers to follow

their dreams and guide them through the highs and lows of the profession, but its message is relevant to all walks of life.

P.S. Can you work out which sentence I made up?

Sophia's Christmas Fayre

My previous victim in this column, Sophia, organised a Christmas Fayre as part of the fundraising for her expedition to southern Africa. Here are her brother Alistair and his friend Kieran providing an excellent musical potpourri of jazzed-up Christmas Carols.



Carols at The Village Swan

Once again, The Beacon Community Choir, led a merry carol singing evening at The Village Swan, raising money for charity. ►



Santa's Round

Yet again, Santa found time to visit the children of IA, borrowing a festively coloured tractor whilst Rudolph and friends rested up before their long flight home.



Wassail, wassail all over the village

Wassailing is a tradition that happens on or around twelfth night or epiphany, the end of yuletide, in which thanks are given for all things natural, in particular apple fruit. This is celebrated by music round a fire, eating fruit cake, drinking mulled cider and shooting fireworks. Wassailer-in-Chief, Neil Ashby, hosted IA's event with a fire at the apple orchard at Ivinghoe Aston Farm, followed by a walk to you-know-where for the libation, accompanied throughout by the local Morris dancers.

Rikki Harrington

Brampton, Ivinghoe Aston **01525 220625**;
harrington.rikki@gmail.com.

Please get in touch if you have any news, views or ideas!

Rural crime update from Assistant Chief Constable Nikki Ross

Reports of rural crime in the Thames Valley have increased by five percent between October 2016 and September 2017.

I would like to reassure members of our rural communities of my commitment to investigating reports of rural crime. We rely on information from our local communities and take such reports very seriously. Incidents are robustly investigated by our local policing teams who have dedicated Rural Crime and Wildlife Officers based across the Thames Valley.

Rural crime can take many different forms including burglary, robbery, theft, criminal damage, fly tipping, poaching and hare coursing. We are continuing to work with local residents, businesses and partners to raise awareness of crime prevention techniques while developing problem solving solutions to tackle rural crime.

There are often fewer witnesses to rural crimes and greater opportunities for criminals to target isolated properties and businesses. The impact of these crimes can also be greater, with people feeling more vulnerable due to their remote location.

You can reduce the risk of becoming a victim of rural crime by taking a few simple steps including:

- Keeping the boundaries of your land and property well-maintained and secure
- Fitting strong locks to sheds, garages and outbuildings
- Checking security equipment regularly to ensure it is working properly
- Locking equipment away in a secure building when it's not in use
- Security marking your tools and equipment

For more crime prevention advice, and to see details of your local Rural Crime Officers, visit the Rural Crime page on the Thames Valley Police website at: <https://www.thamesvalley.police.uk/advice/protecting-your-business/rural-crime/>

If you become a victim of rural crime or suspect that a crime has taken place, you should always report it to police by calling the non-emergency number, 101. If an incident is in progress, or there is an immediate threat to life, you should call 999.

You can receive the latest rural crime news from Thames Valley Police and their partners directly to your phone or inbox by signing up to CountryWatch at: <http://www.thamesvalleycountrywatch.co.uk/>

Nikki Ross Assistant Chief Constable

Leighton Plumbing & Heating

Oil boiler servicing, repairs and installations.

All other aspects of plumbing & Heating undertaken.

Please see our reviews and pricing on the boiler juice / myboilerservice website.

01525 385250 / 07774567472

Oftec registered & Insured Leighton-plumbing@ntlworld.com



11 Woodman close
Leighton Buzzard
Beds.
LU7 3nu

Write or update your Will and support Rennie Grove Hospice Care



Throughout February, a selected group of local legal experts are donating their time and legal expertise to write a standard Will in return for a donation to Rennie Grove Hospice Care.

Rennie Grove Hospice Care is a charity providing care and support for adults and children diagnosed with cancer and other life-limiting illness and their families. Every year through our 24/7 Hospice at Home service, our Family Support services and the range of Day Services at Grove House, St Albans we give thousands of patients the choice to stay at home, surrounded by their families and friends.

Thanks to local solicitors who have teamed up to support the scheme, it will be a great opportunity to start 2018 by getting your affairs in order while helping local families with your donation.

If you want to have control over what happens to your assets after your death, effective estate planning is essential. It may be an uncomfortable subject to think about but not having a Will can cause problems for your family – often at a very difficult time.

Making a Will makes things that little bit easier for those you leave behind; they'll be looked after and they can carry out your wishes confident that they are doing what you want. If you die without a Will,

your estate will be shared out according to the law instead of your wishes and there is no guarantee that your loved ones will receive what you intended.

Make Your Will Month generates widespread support that helps to raise urgently needed funds for Rennie Grove Hospice Care. To take part, you can simply contact one of the participating solicitors and make an appointment for February, explaining that you would like to support Rennie Grove's Make Your Will Month. The solicitor you choose will help you plan, write or update your Will and will provide advice so that your family does not pay more inheritance tax than they need to.

As well as getting your own affairs in order and taking care of your family, you'll be able to safeguard Rennie Grove's service for future generations. If you are able to consider leaving a gift in your Will to Rennie Grove, this will enable more patients in the future to have the choice to remain at home and receive its specialist services.

New Free Legal Advice Clinic

To find out more about this and for a full list of participating solicitors, visit www.renniegrove.org/makeyourwill or contact Michele Poli on **01442 507344** or email legacy@renniegrove.org

Local solicitors taking part are:

City Lawyers

Suite 2, Phoenix House,
63 Campfield Road,
St Albans, AL1 5FL

E: louise.stradling@city-lawyers.com
01727 228890

Davis & Co

Chartered Certified Accountants
Ellerd House,
Amenbury Lane,
Harpenden,
Hertfordshire, AL5 2EJ

E: ad@davis-co.co.uk
01582 761121

Debenhams Ottaway

Ivy House, 107 St Peters Street,
St Albans AL1 3EW

E: hp@debenhamsottaway.co.uk
01727 837161

Neves Solicitors

Tollgate House, 69/71 High Street,
Harpenden, Herts AL5 2SL

E: anne.obrien@nevesllp.co.uk
01582 715234

Sherrards

4 Beaconsfield Road, St Albans,
Herts, AL1 3RH

E: ndm@sherrards.com
01727 832830

Taylor Walton

Taylor Walton House, Station Approach,
Harpenden, Herts, AL5 4SP and
Thornycroft House, 107 Holywell Hill,
St Albans, Herts, AL1 1HQ

E: Christine.prosser@taylorwalton.co.uk
01582 765111



Pitstone Community Car Scheme

Servicing Healthcare Appointments

Destination	Price £.p
Amersham	16.00
Churchill (Oxford)	27.50
High Wycombe	17.50
Luton & Dunstable	9.00
Stoke Mandeville	9.00
Tring	4.00

(Further destinations available on request)

Volunteer drivers always needed

Phone: Klaus Ginda 01296 668911

WI News...

Ivinghoe & Pitstone Branch

Happy New Year to everyone and I hope you all had a wonderful Christmas with your families.

Last September we had a very interesting talk on First Aid and Defibrillators. We have fundraised for our 100th year so have decided to donate £1000 to both Ivinghoe and Pitstone Parish Councils towards the installation of defibrillators in each village.

Our October meeting was another interesting talk by Jean Yates on WWII Waging a Secret War.

November saw a change of committee at our Annual Meeting Helen, Angela, Rachel, Betty and Win all came off the committee and our thanks to them for all they have done. A special thank you to Win who has been a 'FAB' Secretary for almost 15 years and has kept us up to date and in touch with all our WI information and news.

Mandy has come on as Secretary, Tessa as Treasurer and Sue E and

Christine as extra members, so we are looking forward to new challenges in 2018.

Our December meeting was a wonderful evening at the Kings Head, good food and company and a visit from Father Christmas ended our 100th year with a bang.

Our first meeting for 2018 will see about 10 new members joining our WI. So we hope they will enjoy all that we do.

Our Bursary was drawn at our Christmas Do and Annette was the lucky recipient.

Date for your Diary

Sunday 11th February is our Valentine Lunch. Please book early for this popular event.

Arrive at 12 for 12.30 lunch the cost is £12 for a hot 2 course lunch. All diets catered for.

Tickets from Sue **01296 660436** or Lynne **01296 668072**.



Enjoy Home cooked food at the

Waterside Café

Pitstone Wharf, Cheddington Road, Pitstone,
Bucks LU7 9AD

Breakfasts, Lunches, Soup, Sandwiches, Toasties
Homemade Cakes, Cream Teas plus a selection of
Hot & Cold Drinks

OPENING TIMES

FRIDAY SATURDAY AND SUNDAY - 10am to 3pm

BANK HOLIDAYS 10am to 3pm

On request for group bookings we can offer seating for 36people.

Email: café@pitstonewharf.co.uk www.pitstonewharf.co.uk

PITSTONE MEMORIAL HALL & MILLENNIUM EXTENSION

The large Millennium Extension consists of a generous room with a capacity for 70-80 people and a smaller room with a capacity for 50 people



Bar facilities are available by arrangement with the booking clerk

For further details and revised prices please contact the Booking Clerk,
Mrs Sue Gregory, 4 The Crescent, Pitstone. 01296 661609

Ivinghoe Town Hall... News!

We are still seeking new members for our small team of people who look after this vital asset for our community. If you are interested in helping out then please contact Andy Beezer on **01296 668802** or email **andy.beezer@bardecode.com**.

Ivinghoe Town Hall regular events:

The Town hall is an ideal location for family parties or weddings so don't forget to book early.

Also, have a look at the regular Weekly events held at the Ivinghoe Town Hall.

Why not try one of these regular weekly events?

Monday: 4pm-8pm – **Ballet**
Lisa (07834 281434)

Tuesday: 9.45am – 12pm – **Beacon Art**
Marion (01296 668429)

Tuesday: 7pm – 8pm – **Zumba**
Carolyn (07941 092673)

Tuesday: 8.15pm-10.15pm – **Morris 'New Moon' Dancers** Martin Lindridge (07803-149490)



Wednesday: 8:30am and 11am **Natural Pilates** Andrea (07855 138005)

Wednesday: 7pm – 8:30pm **Yoga**
Sally Craig (07753-985155)

Thursday: 7.00pm – 10.00pm **W.I.**
2nd Thursday of each month
Sue Jones (01296 660436)

NOTE: We have 'slot availability', on Monday AM's, also Tuesday and Wednesday PM's, Thursday AM/PM's and all day on Friday's!

Also, please try the web site at **www.ivinghoetownhall.org.uk** where you can see regular activities and search for Hall availability dates, and make a Booking enquiry on-line.

If you prefer to enquire in person then call Stephen Swinbank (The Booking Secretary) on **01296 660680**. Or email: **spswinbank@gmail.com**

The Post Office and Shop direct telephone number is: **01296 660682**.

Andy Beezer



Historic user-friendly Hall with awards for Best Used and Managed Small Hall in the County. Sited in the centre of the Village, the Town Hall provides modern facilities for local groups, parties and fundraising activities.

IVINGHOE TOWN HALL

www.ivinghoetownhall.org

Planning a party or meeting?

Facilities include:

- Music options including a quality electronic piano
- Stage with specialised lighting, curtains & dressing room
- Kitchen with microwave, oven, hob, fridge, comprehensive crockery and glassware
- Chair lift/wheelchair for those with mobility problems.

If you would like further information, contact **Stephen Swinbank** on **01296 660680** or **spswinbank@gmail.com**

FORD END WATERMILL IVINGHOE, BUCKINGHAMSHIRE

The only working watermill to survive intact in the county. The mill, recorded in 1616 but probably much older, was in use until 1963.

Now restored by volunteers and run by Ford End Watermill Society, it retains all the atmosphere of a small farm mill of the late 1800s.

Visitors can work the sack hoist and mill wheat on a rotary hand quern. Stoneground wholemeal flour for sale on milling days.

OPENING TIMES 2018

Afternoons 2.00–5.00pm 2nd April - Easter Monday, 15th April - Sunday, 7th May - BH Monday, 13th May - National Mills Weekend, 28th May BH – Monday, 17th June - Sunday, 15th July - Sunday, 29th July – Sunday, 12th August – Sunday, 27th August - BH Monday, 16th September - Sunday, 14th October – as part of Tring Apple Fayre.

MILLING DEMONSTRATIONS (water level permitting)
between 2.30pm-4.30pm approx

Last admission 4.30pm. Admission: Adults: £3 children (5–15) £1

Ample car parking – no toilet facilities. Restricted disability access. School and other parties welcome by arrangement.

Contact: Mill Manager - Chris Tugby, millman@fordendwatermill.co.uk or Telephone: 01442 825421. **www.fordendwatermill.co.uk**



LOCATION

Station Rd, Ivinghoe, Bucks LU7 9EA
600 metres from the church along Station Road.
The B488 to Leighton Buzzard.



The BeaconLit News Release

International Bestseller bound for Ivinghoe

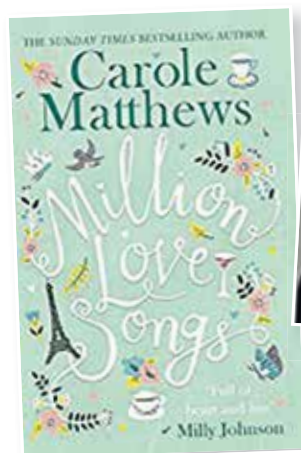
International bestselling author **Carole Matthews** is amongst a star-studded programme being put together for **BeaconLit 2018**. Ivinghoe's own literary festival will take place in **Brookmead School on Saturday July 14**.

Carole Matthews is a successful and popular British author, famous for her sense of humour and her romantic comedy novels. Her books have sold over 4.8 million books worldwide and have been published in more than 31 countries. In 2011, she was inducted into the Festival of Romance Hall of Fame for her outstanding contribution to romance writing. She has published 31 novels and has appeared on the *Sunday Times* and *USA Today* bestsellers lists and her books, *Welcome To The Real World* and *Wrapped up in You* have both made the shortlist for the Romantic Novelists' Association Romantic Novel of the Year Award. Her latest book is *Million Love Songs*.

Other names confirmed at the time or writing include hot new crime-writing talent **Vicky Newham**, BBC reporter **Adina Campbell**, author, blogger and creative writing tutor **Morgen Bailey** and Pitstone author **Dave Sivers**.

The festival panel is promising the usual eclectic programme of panel discussions, live interviews, talks and workshops.

There will be **free parking** on Ivinghoe Lawn, just a short walk away (disabled parking available at the venue), **light refreshments** available all day, pre-orderable **packed lunches** (bring your



Carole Matthews

own picnic if you'd rather), and a **goodie bag** with treats and surprises. The bags are ideal to carry your purchases from **Chorleywood Books**, which the authors will be delighted to sign for you, and there will be opportunities throughout the day to win books and other goodies.

The organisers are again holding prices at 2016 levels, and full day passes will be available soon at the **Early Bird** price of £19.50, but you'll need to be quick – the offer will be time limited, and the price will then rise to £25 – still a bargain. Separate morning and afternoon tickets will go on sale nearer the time.

BeaconLit continues to go from strength to strength and has put the area firmly on the literary festival circuit. So **save the date** and watch this space for further news!

The festival website is at:
www.beaconlit.co.uk

Dave Sivers



Tell us your views on the Chilterns!

Would you like to have your say on the future of the Chilterns? We are developing our plans to care for the Chilterns for the next five years and beyond and we would love to hear your views.

Please fill out our survey with the chance to win £50 vouchers!
<https://www.surveymonkey.com/r/FutureOfTheChilterns>



Hub News... Happy 2018



Join in with our DIY skills!

Your Ivinghoe Community Hub 2017/2018: Following the Seasons has all become a romping celebratory Hub tradition. This year, the prep for our HUB annual pre-Christmas evening Market was led by Hayley Wesley, our Café Tenant, who also led a Pampering session in the Old Town Hall – whilst the 8 Hub Trustees tackled much Autumnal DIY indoors and out. Trustees had 2 stalls of Hampers, one game of Christmas painting, a book stall and a roasting chestnut stall all for supporting Hub funds, present. In what evolved into a brilliantly popular and seasonally empathetic 24 stall Market event, the pleasure of experiencing Carol singing from school and Church, the night sparkling with little lights and lanterns inside and out – animals to be stroked in the petting Zoo, all led to a very happy atmospheric visual and tasty shopping and communing for all our visitors.

Ever since 2011 when Ivinghoe Community started the process to save the Old School Building, refurbish it by grants, and turn it into an independent

space for this Community and its visitors, refreshed by our tenant Community Café CuriosiTEA Rooms food and drink seven days a week, we have worked to introduce some sustainable comfort, diversity, fun and welcome for all, within all its Victorian spaces.

Here we sit seven years later, four years into our 25 year lease, comfortably on the corner of Ivinghoe Lawn, next to the children's play area and supportive of all comers with what we can provide of what they tell us they need. Run by eight elected unpaid volunteer trustee background crew, we are working now to get all the details of running this level-access space into very clear shared order, so that it will stay strong well into the future. **Jane Elliott's bench seat**, whose ribbon was cut this spring, is a popular spot and our Heritage Book on the Old School and surrounding 100 years of Victorian Ivinghoe History is

selling well from our trustees at £10 a book – with under 100 left. We continue to 'Simply walk' on Mondays at 10am and 'Simply Sing' outside or inside – on the first Friday in the month at 4-5pm.

You are all so welcome to join in!

What we just added: Our Hall hiring profits are ploughed back into the spaces, recently replacing the oven, dishwasher and over – hob vent in the Café kitchen and commissioning all the outside woodwork to be restored and painted, we have installed a motorised film screen to add to our PA system for inside the Hall use. This took us to nearly £6,300 and was tackled by the trustee team taking deep breaths and dividing essentials from highly desirables, prioritizing and pushing back to late 2017/2018 those less urgent needs, which will appear later. We have been congratulated on our progress by BCC and repaid by the present of a bespoke seminar where all the trustees present were advised on **'Consolidating our Sustainability'**. So we have set about sharing out all the information in detail, amongst our eight 2017/18 trustees, elected at our last AGM. **We are making a TASK Calendar** on which all tasks which need doing at what time of the year; and we are making a TASK MAP of what is held where, like meters, keys etc. A folder of TASK details backs all this up, showing the what, why, where and when of each task, with some ideogram small notices for the public spaces to follow. Our newish pavers, flowery planters and the remainder of the ex-pub metal garden furniture all provide an extra dimension to the

Hub in its back (almost secret) Garden space where you can sit in peace in the sunshine and watch the sun go down in an uninterrupted historical open view. This garden space is now bookable as an addition to the inner 'Hall' space for those who wish for a safe, pretty and quiet extra space.

What we plan in soon: A continued **Flower and Veg Show!** Also we are working on our own capacity and sustainability by sharing the task information between the trustees more fully now. We also are fulfilling our remit by encouraging those who are interested to bring forward ideas that create more social interaction for three specific age related groups we aim to reach. Something for the **young parents and children** to do in our Hall space; **something for responsible teenagers to do** in the Hub of an evening – we would love to have a teenage trustee also; and **something for the over 50s to join together and do**, either all on one day or as separate 'fitness to music', 'lunch club' and 'social club' hours. We hope some of you will feel able to run your own age related clubs, hiring out our Hall space and charging your 'clubbers' yourself – like your own small business.

We are on the lookout for a skilled and generous, retired local carpenter to slowly improve our much-needed storage space over time! If interested should pop in and tell or phone, email, Facebook us or use our website please.

How to book hub space: Booking space within the Hub is easy but needs to follow through by the Hirer who:

- 1 Approaches café team who man the Hub Diary 7 days a week at ►

café counter or the **Hirer approaches Trustee team via phone or email. Half space £9/£7 per hour or whole hall £12/£10 per hour** (or an element of the IT Room after negotiation)

2 The process is explained by obtaining from either source a **vital Booking Form** which includes the extra special options bookable, the insurance cover and awareness of the hirers cleaning up obligations – to be filled in and returned within 7days and the fee paid – if not then – no later than 3 days before the date booked.

3 By this returned form and fee, the booking is **made formal and then penned into diary** which means

it cannot be over-ridden or double booked – This booking then translates to our 'digital diary' graphically – charted monthly by Bob – posted on Facebook Page, web-site and email data-base, hard copy on Notice Board for Public viewing. See our many Facebook Hub Photographs of much that goes on!

Contact us on telephone **01296 661666**; email: **ivinghoeoldschool@btconnect.com** web site: **www.ivinghoeoldschool.com** Facebook page: **Ivinghoe Old School Hub** CuriosiTEA Rooms **01296-663853**.

Carol Tarrant



1st Ivinghoe and Pitstone Beavers (5 3/4 -8 year olds)

Monday 6-7pm with Tom as Watermill Coloney leader
Tuesday 6-7pm with Jakki as Windmill Coloney leader

1st Ivinghoe and Pitstone Cubs (8-10 year olds)

Wednesday 7-8:30pm (Dan) Akela as Windmill Pack leader
Thursday 6:30-8pm (Rob) Shere Khan as Watermill Pack leader

1st Ivinghoe and Pitstone Scouts (10 1/2 -14 1/2 year olds)

Friday 7:30-9pm Andrew as Troop Leader

For any enquiries or to join the waiting list please contact us on **ivinghoe.pitstone.scouts@gmail.com**
Or our Group Scout Leader, Keith Steers on **Keithsteers@gmail.com** or 07899 696722

We are also raising money to rebuild the village a purpose built scout hut and are selling bricks to supporters for £10 each. Please email the above address for details.

Community space for hire - of great Victorian character, recently refurbished by our Community, for this Community's use.

Ivinghoe Old School Community Hub

www.ivinghoeoldschool.com 01296- 661666

Email : **ivinghoeoldschool@btconnect.com**

Facebook: **Ivinghoe Old School Hub**



Venue run with financial transparency by our 'not for private profit' local voluntary trustees for Community Benefit and increased Community Wellbeing.

Space is at ground level for easy access, is warm, and with restored Victorian varnished floorboards, and new comfy modern padded stackable chairs, fold away tables and ambient new lighting - can swiftly adapt to all activities for all generations.

£9 for first hour in 37.65 sq.m room with piano or 31.61 sq.m room with sink and **£7** per hour thereafter.

69.26 sq.m room with retractable screen midway. **£12** for first hour and **£10** thereafter per hour.

Contact us or come in for a booking form and our support for your plan.

CuriosiTEA Rooms is our pivotally important permanent tenant within our building and serves home-made affordable refreshments and hot meals seven days a week. Special arrangements for space hirers who do not wish to self-cater for their own events can be arranged with Hayley Wesley on – 07775-831153
Facebook CuriosiTEA Rooms, or email hayleywesley79@gmail.com

IT Suite

Software includes Microsoft Office 2013 Suite; Photoshop C6; Skype with webcam and microphone;

£2 per PC....one with 40" wall mounted monitor and speakers.

10p A4 b/w photocopy; 50p A4 colour scan and print; 50p A4 lamination

Booking whole space for small conference or meetings etc. £10 an hour.

Personal tuition starting soon!

CuriosiTEA Rooms



**Registered Charity
Number 1165850**



BVCL 100 CLUB

Now in its 4th Year!

Come and join our many prizewinners and help to support your local Library.

Why not pick up a pack at the Library in Ivinghoe? Or email

treasurer@bvcl.org.uk for further

details and an online application form.

Panache interiors

- Soft furnishings for your whole home or simply one room
- Supplying bespoke curtains, blinds, loose covers, cushions, tracks & poles and lots more
- Complete service including design, fabric samples, measuring, making up and fitting

Sandra Ford

T: 01296 660868

E: sandra@panache-interiors.com

www.panache-interiors.com

MASONS MINIBUS & COACH HIRE

25 / 48 / 51 / 53 / 57 / 71
Seat high quality vehicles

For all your travel arrangements
Local and long distance
UK & Continental

Tel: 01296 661604



2010 Brochure now available - please call for your free copy

email: info@masonsminicoachhire.co.uk

www.masonsminicoachhire.co.uk



Small Paws At Home

Pet Sitting Service – Looking after all your pets needs whilst you are away.

Small pets cared for in their own home, allowing them to relax in their own environment.

Other duties include; bins taken out, curtains/blinds opened & closed and post secured.

Call Elaine on

01296 668863 / 07837 292403

Email: smallpawsathome@icloud.com

Web: www.smallpawsathome.co.uk

James B Chadburn FBHI Fine Antique clocks & Barometers

Specialist in repairs & restorations.

Valuations & clock finding service.

Advice & assistance on formation & disposal of private clock collections.

Quality clocks/barometers Bought & sold.



Telephone 01525 221165

Mobile 07790 000629

E-mail: info@jameschadburn.com

FIRST THURSDAY FRIENDS

Friendly chat, board games for those who wish and a choice of cake with endless tea or coffee at just £2.

ALL WELCOME

On the first Thursday of each month at 2p.m. in the Millennium Room at Pitstone Memorial Hall

We plan to reintroduce film shows on alternate months as soon as possible.

*Want more information?
01296 668005*



BELLOWS MILL EATON BRAY

Attractive short term and overnight accommodation in idyllic surroundings of old water mill. Licensed for civil wedding ceremonies and receptions for up to 80 guests. Small meeting room.

For details phone 01525 220548 or email reservations@bellowsmill.co.uk

TOWN FARM



Town Farm • Ivinghoe • Leighton Buzzard • Beds LU7 9EL

A new campsite right at your doorstep!



T: 07906 265435

www.townfarmcamping.co.uk

Do not be afraid...

I was struck by how many people were afraid during the Christmas story.

We would expect happiness rather than fear at the birth of any child. Mary was told not be afraid by the angel at the prospect of becoming the mother of Jesus. Joseph was told not to be afraid but to take Mary as his wife. The shepherds in the fields were told not to be afraid at the sight of the angels. Herod was so afraid of the message of a new king being born that he had all the little children in Bethlehem killed.

Easter is particularly early this year and will be here soon in just a few weeks. Again, we will find fear at this celebration of the end of the gospel story. When Jesus rises from the dead, he says to his friends: **"Don't be afraid...I leave you my peace."**

Fear is there throughout the gospel. Jesus calls Peter to follow him, telling him not to be afraid. When Jesus walks on the water towards his disciples in their boat, he sees what they are like and says: **"Have courage, don't be afraid; it's me!"**

Some, such as the shepherds at Christmas and the disciples at Easter, overcame their fear. Others remain trapped in it. Herod was a tyrant who ruled through fear and he himself was ruled by fear. Fear is still all around us today with the threat of terrorist attacks, financial uncertainty and the changes we face in ourselves, in our families and around us in the country.

The words **"Do not be afraid"** appear 366 times in the Bible. It as though we need a daily reminder to respond to God, who is love, in worship. **"Do not be afraid"** is the most basic message for a life of faith but one we need take hold of anew every day. Not to be ruled by fear is a prerequisite for knowing peace in many ways.

Revd Adrian Manning
Vicar of Ivinghoe and Pitstone



Ivinghoe & Pitstone Chapel Fellowship

We are a small and friendly group of local Christians who meet to worship God in a fairly informal way, in song, in prayer, and with messages brought by a variety of local preachers. We meet on Sunday mornings at 10.30am in the Millennium Room at Pitstone Memorial Hall for services that last about an hour, followed by social chat over a cup of tea or coffee.

ALL ARE WELCOME

Why not come and join us?

FIRST THURSDAY FRIENDS

Come and enjoy a family film on the first Thursday of each month.

Time 2pm (approx) 4.15pm in the millennium room

INTERESTED?

If you would like more information please call:

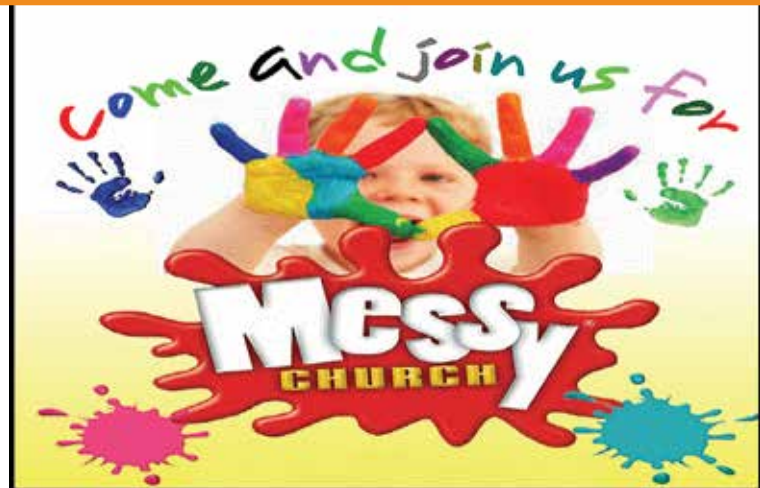
01296 668005

IVINGHOE HAND-BELLS

We have a beginners group meeting fortnightly in the church ringing the beautiful hand-bells that belong to St. Mary's Church Ivinghoe.

If you missed the taster evening, and would like to have a go, or see and hear what happens it is not too late so please get in touch or come along to a Monday evening meeting. We have fun, a break for refreshments and experience the very special sound of our 139 year old bells.

Alex Wynne **01296 668336**



Theme: Messy Easter

When: Sunday 25th March

Where: St. Mary's Church, Ivinghoe

Time: 2.30-4pm

All families welcome for fun, food and all-age activities

Contact: Sandra Green on 01296 668648

Looking for somewhere to take
the children during half term?

Come along to
St Mary's Church Ivinghoe for:

'Coffee, Cake and Crafts'



Friday 16th February
from 10.30 - Midday

Ivinghoe Allotments

Tales from the Plot



Hi, First of all I hope that you all had a good festive time and wish you all a very happy, healthy and prosperous New Year, with successful growing thrown in.

This winter we have certainly had a variety of weather conditions. The severe nights of frost certainly did the autumn planted garlic a world of good, compared to last winter, when we experienced very little frost, resulting in very poor garlic plants. The snow unfortunately, nice as it is, but better on Xmas cards, caused damage to some of our plots, my blackcurrant cage certainly changed shape, but other plot holders suffered more damage.

At this time of year, it is truly amazing how we are spoilt for choice with so many different varieties of every vegetable that we would like to grow, but don't be too cautious in your choice. Do try distinguished old breeds, or indeed those known to be suited to your allotment site, consider growing some fun varieties, you could get black tomatoes, purple, orange or yellow carrots, or like me you end up growing the old regular trusted varieties of potato, tomatoes and onion.

The month of February is busy but frosty weather may stop you doing much outdoors. Peas, Broad Beans and Radishes may be sown under cloches, cumpers for the greenhouse can be started indoors.

Shallot planting, which is one of my favourite activities on the plot can be started, plant them in the soil until just the tip is showing 6" apart and between 12" rows. Check them occasionally as birds are

attracted to them and just lift them up, so push them gently back in, keep them weed free and you will be rewarded with clusters of 8-12 similar sized bulbs. Either to pickle, or to use in cooking. February is also the time to buy your seed potatoes, so save up the egg cartons they are ideal to set up your potatoes to encourage sprouting. Remember you do not want the seed potatoes to be too large, as they will soften up whilst they are sprouting.

The Ivinghoe Flower Show has now got a new committee, the Trustees of the Hub have agreed to take charge of the show together with the assistance of keen and enthusiastic Pitstone Allotment Holders. May I on behalf of the previous committee wish them all every success in the future and that hopefully they will be fully supported in their efforts.

I do hope that as a gardener or allotment holder 2018 will bring you all that you aim for in your endeavours with the soil.

Mind how you go...

Ernie Ivinghoe Allotmentee



Allotment Diary

It is blowing a gale outside as I sit in my shed looking at my plot and drawing up a plan for this year, deciding what to plant and where so I do not sow anything in the same bed as last year. My hens are not at all happy with this weather, feathers are truly ruffled.

Christmas has come and gone although Christmas Day was a bit dismal it was still good fun to go and crop my vegetables for Christmas lunch. I do not know if it is an old wives tale that sprouts and parsnips taste better after a hard frost but mine were lovely. The snow just before Christmas caused a lot of damage to plots with netting and fencing round them (to keep out the resident wildlife) with many posts down, quite a bit of maintenance

is required to repair the damage. It was nice to have allotmentees from Pitstone allotments come over for a look round over the holidays.

By the time this issue of the Beacon comes through the door I will have planted my onion seeds in the greenhouse and will be itching to get going on the plots. I usually sow my potatoes Good Friday but as Easter is early this year so may have to hold off. Fingers crossed for a nice spring and no frosts at the wrong time.

A happy new gardening year to all, **Gloria**.

PS: All the photographs in the Beacon magazine can be seen in full colour on the Ivinghoe Parish Council's website.



R.M.L

Tree services



- **Tree Felling & Shaping**
 - **Hedge Cutting**
 - **Stump Grinding**
 - **Site Clearance**
 - **Logs**



**FULLY
INSURED**

**Licenced
Waste
Carrier**

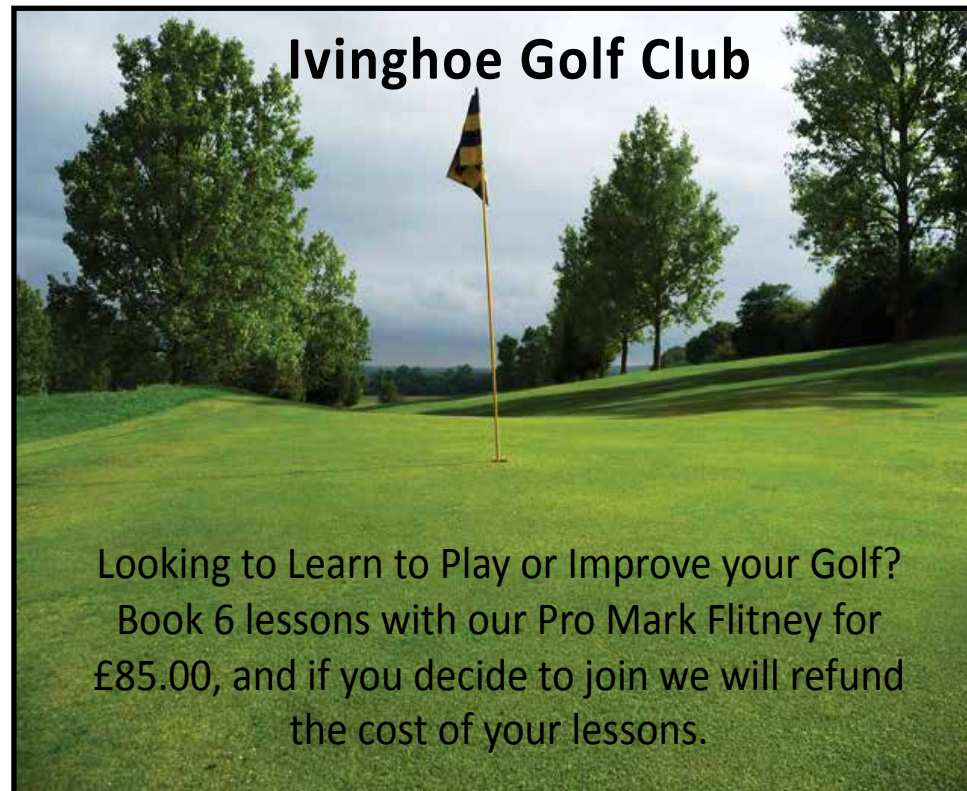
Contact Robert on:

Daytime: **07585 007109**

Evening: **01442 864785**

email: rmlservices@outlook.com

Ivinghoe Golf Club



Looking to Learn to Play or Improve your Golf?
Book 6 lessons with our Pro Mark Flitney for
£85.00, and if you decide to join we will refund
the cost of your lessons.

- Various Adult Membership schemes available starting from less than £8.00 per week.
- Junior Membership £99.00 or only £20.00 with a Parent holding 7 day Membership.
- Turn up and play Green Fees from £10.00 for 9 holes.

Discount Golf Shop with the largest
selection of equipment in the area



For further details contact:

Pro Shop: Tel: 01296 668696

Clubhouse: Tel: 01296 668696

E-mail: info@ivinghoegolfclub.co.uk

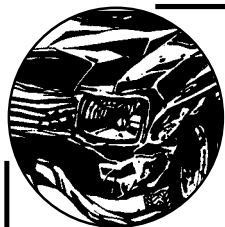
www.ivinghoegolfclub.co.uk

Looking for a
local Venue for
a Party?



Our Clubhouse is available for
private hire for birthdays and
celebrations.

Ivinghoe Golf Club, Wellcroft, Ivinghoe, Nr. Leighton Buzzard, Beds, LU7 9EF



M. D. SPRING AUTOS

Martin D Spring
28 years established trading



For all your vehicle's needs
Servicing, Class 4 and 7 MOTs on site, Exhausts,
Welding, Tyres and Brakes

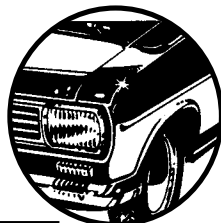
Your vehicle can be picked up and returned free of charge

Call now for a competitive quote

Telephone & fax: 01296 662280

Mobile: 07860 847328

Unit 9, Airfield Ind Est, Cheddington Lane
Long Marston, Tring, Herts HP23 4QR



GROOMS FARM SHOP

FRESH MEAT & POULTRY
FREE RANGE EGGS & VEGETABLES
CHEESE, OLIVES, PIES, PATÉS & NUTS
FREE LOCAL DELIVERY

OPENING TIMES

Thursday 9.00 - 12.30

Friday 8.30 - 5.30

Saturday 8.30 - 12.30

Orders can be placed outside
these times by telephone

WILLOWDENE FARM

IVINGHOE

TEL: 01296 668326



W Roff Agricultural Services

- Hay & straw for sale
- Paddock maintenance
- Fencing



07909 680807

ELSAGE FARM, CHEDDINGTON

P. DYER ELECTRICAL

For all your Electrical & Testing & Inspection needs

- Re-wires
- Testing & Inspection
- Security Systems/Lighting
- LED & Low Energy Lighting
- Decorative Lighting
- PAT Testing
- Fuse Boards
- Fault Finding/Repairs

Fully insured, Part P registered, all work guaranteed.
Fast, friendly, reliable, local electrician. For a free,
no-obligation estimate, call Paul on:



Tel: 01525 222109
Mobile: 07850 682815



IVINGHOE TURF

Suppliers of

- Turf
- Topsoil
- Fertiliser
- Bark
- Grass Seed



www.ivinghoeturf.co.uk
01296 661939
sales@ivinghoeturf.com

RGC

Agricultural &
Horticultural Engineers

Mursley, Milton Keynes, Bucks MK17 0SA



Tel: (01296) 720066

sales@rgcengineers.co.uk

www.rgcengineers.co.uk

Sales, Service & Repairs

Garden Tractors
Chainsaws • Strimmers
All Garden & Ground
Care Equipment

Compact Tractors, Quads etc.

Service & Repairs to most leading
makes of machine.

Ivinghoe & Pitstone's Windmill Pre-School

Windmill Pre-School in Ivinghoe is one of the top pre-schools nationally and highest rated locally



"Children make excellent progress in all areas of their learning and development because staff plan an outstanding range of activities..."

"Children have fun and are purposefully engaged in all areas of this dynamic setting. They make excellent progress as staff recognise them as unique individuals..."

Source: Ofsted report June 2011

Morning session: 9am-12pm
Afternoon session: 12pm-3pm (includes Lunch Club)
Lunch Club: 12pm-1pm (subject to availability)

We welcome all children between 2 and 5 years from Pitstone, Ivinghoe & surrounding areas to our purpose-built premises behind Brookmead School five full days per week

IT'S NEVER TOO EARLY TO REGISTER YOUR CHILD

For further info and to arrange a visit for you and your child please contact us:
 admin@windmillpreschool.co.uk or 01296 661031 (during sessions)



www.windmillpreschool.co.uk

Registered Charity No. 1032380



Childcare
Vouchers
Accepted



WHERE LEARNING & GROWING ARE FUN!

Marsworth Preschool, held at Marsworth Millennium Village Hall, is a wonderfully caring, fun & nurturing environment for children aged 2 to 5.

Our dedicated and experienced team provide a warm and loving setting that is rich in educational and fun resources, tailoring activities around the children's individual strengths and interests.

Ofsted rated 'Good' at our last inspection.

We're open 9am to 3pm term time - Monday, Wednesday, Thursday and Friday

T: 07506 179658

E: enquiries@marsworthpreschool.org.uk

W: marsworthpreschool.org.uk

Brookmead School

Headteacher: Katherine Douglas

Bringing Learning to Life and Life to Learning

Our school is located in the beautiful Chiltern hills, which is something to be celebrated and shared. Established in 1967, Brookmead School provides a happy and stimulating environment that promotes an enjoyment and love of learning. We aim to enable all our children to reach their full potential, both as learners and as valuable members of our school and wider community.

Brookmead School is a Foundation Primary School for children aged 4 - 11 and serves the communities of Ivinghoe, Pitstone (including Castlemead) and Marsworth.

For further information or to arrange a visit please contact Mrs Kerr on 01296 668543 or email office@brookmead.bucks.sch.uk.

Brookmead School, High Street, Ivinghoe, LU7 9EX
www.brookmead.bucks.sch.uk



Girlguiding

Rainbows: Monday 4.30 – 5.30pm Pitstone Memorial Hall
 Guider: Elaine Thorogood **01296 661540**

Brownies: Monday 5.45 – 7.15pm Pitstone Memorial Hall
 Guider: Elaine Thorogood **01296 661540**

Girl Guides: Tuesday 7.00 – 8.30pm Millennium Room,
 Pitstone Memorial Hall Guider: Yvonne Ashton **01296 660044**

To join us, please visit our website at **Girlguiding.org.uk**

Ashridge Ramblings – Springtime Blues

Does British nature provide any greater spectacle than an endless vista of bluebells? Not in my opinion. Is there any better place to witness this phenomenon than at Ashridge? Ditto. The bluebells of Ashridge are, perhaps, the most famous in the world. They feature annually in the dailies and periodicals advising people where to see them. I even read about them in one of those otherwise stultifyingly dull airline magazines – they were billed as a prime reason for visiting Britain (by air, of course) in Spring.

Dockey Wood, on the left of Beacon Road as you head towards Ringshall, is widely reckoned to be the prime site. In my view, this is largely on account of its proximity to the road and the ice cream van. I prefer to go off the blue piste and into the great blue yonder, especially the areas known as Pitstone Common (north-east of the Monument), Aldbury Common/ Old Copse (south-east of the Monument) and Duncombe Terrace. Wherever you choose, please keep feet and paws off the flowers.

Two years ago, the decision was taken to charge non-National Trust (NT) members for entry to Dockey Wood during peak hours over the two main bluebell weekends. The chief reasons for this were to spread visitor pressure and reduce traffic volume on the long, straight (i.e. fast and potentially dangerous) Beacon Road. The erection of a fence alongside the wood, and low wood banks to deter access to



“elephant tracks” caused by years of trampling, have already led to recovery of bluebells in areas from which they had disappeared. New this year is a dead hedge to prevent trampling of the beautiful beeches at the front of the wood. Soil compaction around the roots of these venerable and vulnerable old giants is undermining their ability to draw water and nutrients into their root systems and so damaging their health and longevity. Just twenty or so years ago, the bluebells grew right up to the verge. Hopefully this new intervention will enable them to creep back in and recolonise this area too.

An additional benefit of the new system has been the presence of NT staff and volunteers able to talk knowledgeably and enthusiastically about the bluebells. Several people have joined the NT on the spot.

The winter blues will soon be over. Roll on the spring blues.

Top ten bluebell (*Hyacinthoides nonscripta*) facts (in my opinion)

- 1) It may also be called common bluebell, English bluebell, British bluebell, wild hyacinth, wood bell, fairy flower and bell bottle.
- 2) A quarter to a half of all individuals of this species are found in Britain.
- 3) It is found everywhere in Britain except the northern Outer Hebrides, Orkney and Shetland.
- 4) It prefers slightly acidic soils and is most prevalent in ancient woodlands.
- 5) It can grow in open habitats, including coastal meadows, especially in the west.
- 6) It is pollinated mainly by bumblebees.
- 7) It is protected from most pests by a suite of defensive compounds.
- 8) It is protected under the Wildlife and Conservation Act (1981) but not under EU or international law.
- 9) It has often been voted the UK's favourite flower and has even been banned from some such polls because of its inevitable victory.
- 10) An albino form can be found in Ashridge. Roughly 1 in every 10,000 plants is white.

Rikki Harrington

JTS DECORATING SERVICE AND PROPERTY MAINTENANCE

FIRST CLASS DECORATION WITH 35 YEARS EXPERIENCE

Private and commercial properties all interior and exterior decoration coving.

Wall and floor tiling plastering.

Floor stripping and renovation local references available,
contact: John

T: 01525 240372 M: 07809 113090

EMAIL JTS.DEC24@GMAIL.COM

Volunteer and help bring a smile to someone's face...

...our volunteer befrienders do this every day

Living with dementia can be isolating. Alzheimer's Society volunteer befrienders make a difference. Find out more about volunteering with us by having a chat with Laura or Lisa on 01296 331722 or emailing bucksbefriending@alzheimers.org.uk

We'd love to hear from you.

Alzheimers.org.uk

Alzheimer's Society operates in England, Wales and Northern Ireland.
Registered charity number 296645.



NEW MEMORY SUPPORT SERVICE IN BUCKINGHAMSHIRE

If you are concerned about your memory, the earlier you seek help the better as there may be support or treatment available that can help you.

There are many different things that can cause memory problems but sometimes it can be an early sign of dementia.

This new service helps you to take control of your situation by offering a single point of contact for:

- Advice and support through memory screening and diagnosis
- A listening ear and practical support afterwards

Get in touch today to find out more.

01296 331749

memorysupport@alzheimers.org.uk

DON'T THINK YOU HAVE MOVES?

So, you're not a dancer. We only have one thing to say to that - **WHO CARES!**

Just come to a class and move!

JAZZERCISE

DANCEMIXX • INTERVAL • STRIKE • FUSION • STRENGTH • CORE

Cheddington Village Hall Monday 7pm Tuesday 9.45am Pitstone Memorial Hall Wednesday 7.30pm	Wilstone Village Hall Mon & Wed 9.30am Tue 6pm Low Impact Thu (Lo) & Fri 9.45am Sat 9.30am	Goldfield Infants School Tring Tue & Thu 7.30pm Nora Grace Hall, Tring Wed 11.30am Lite class
--	---	--

Keri Donnellan - 07900 987230 Email: jazzercise1@hotmail.co.uk
www.facebook.com/jazzerciseBucksBedsHerts



GIRLS FOOTBALL SCHOOL YEARS 5, 6, 7 AND 8

Pitstone & Ivinghoe JFC are running sessions for any girls who would like to play football this season. If you are interested in playing in a friendly environment please contact **Matthew** at chairman@pandifootball.net

All our coaches hold FA qualifications and our sessions are designed to be fun and enjoyable. **We welcome all abilities so why not give it a try!**

Jazzercise for Epilepsy Society

Saturday 18 November 2017 at Cottesloe School, Wing

On Saturday 18 November, over 150 Jazzercisers took part in a 6 session marathon to raise money for the Epilepsy Society. 10 instructors and 55 routines through the day, including Funky Fusion, Ballet Body and Party Mixx, to keep participants on their toes.

The charity was chosen in memory of a young man from Tring, Jeremy Snape, who sadly lost his life to Epilepsy at the young age of 20. More than half a million people in the UK have epilepsy and one third have seizures that cannot be controlled through available anti-epileptic drugs. There are 1,000 deaths from the condition every year, including many children and young adults. Epilepsy can have a devastating effect on people and their families, affecting all aspects of their lives.

As well as celebrating Jeremy, the group were also celebrating 10 years of Jazzercise in the local area and Keri Donnellan, the class owner, teaching Jazzercise for 25 years.

To date, more than £7800 has been raised for the Epilepsy Society; £950 of which came from the raffle, which was only possible with the support of local businesses.

After the event, the room was buzzing with energy, with exhausted happy people! Here are some of the comments:

- Great day today, everything hurts but so worth it. Thanks to all the instructors, you're rockstars.
- Over 25000 steps, more than 3000 calories burned and a huge £7000+ raised
- Well done to Keri and her amazing instructors and managers. So well organised. Fun with a serious side. Just an amazing experience.

About Jazzercise

The 60-minute Jazzercise class includes a warm-up, high-energy aerobic routines, muscle-toning and cool-down stretch segment. Jazzercise combines elements of dance, resistance training, Pilates, yoga, kick-boxing and more to create programs for people of every age and fitness level and has positively affected millions of people worldwide. Benefits include increased cardiovascular endurance, strength, and flexibility, as well as an overall "feel good" factor.

Judi Sheppard Missett, who turned her love of jazz dance into a worldwide dance exercise phenomenon, founded the Jazzercise dance fitness program in 1969. She has advanced the business opportunities of women and men in the fitness industry by growing her program into an international franchise business that today, hosts a network of 7,500 instructors teaching more than 32,000 classes weekly in 32 countries.



Monday	9.30am	Wilstone Village Hall
	7.00pm	Cheddington Village Hall
Tuesday	9.45am	Cheddington Village Hall
	6.00pm	Wilstone Village Hall (Low Impact)
	7.30pm	Goldfield Infants School, Tring
Wednesday	9.30am	Wilstone Village Hall (Strength)
	11.30am	Nora Grace Hall, Tring (Low Impact)
	7.30pm	Pitstone Memorial Hall
Thursday	9.45am	Wilstone Village Hall (Low Impact)
	7.30pm	Goldfield Infants School, Tring
Friday	9.45am	Wilstone Village Hall
Saturday	9.30am	Wilstone Village Hall



Contact Keri TEL: 07900 987230
EMAIL: jazzercise1@hotmail.co.uk
WEBSITE: www.jazzercise.net/uk/



The King's Head, Ivinghoe 01296 668388

Birthdays ?
Anniversaries ?
Getting married ?
Just getting together



Don't forget our
Bon Appetit Luncheon Menu
(Mon—Sat) @ £24.75
Perfect for ladies who lunch!

The King's Head is YOUR village's
fine dining restaurant.

Celebrate in style and let us make your
special occasion one to remember!

The King's Head
"Welcome Card"

15% discount Monday to
Thursday evenings and many
more benefits.
Call 01296 668388
to claim yours



www.kingsheadivinghoe.co.uk



**Tring Market
Auctions**

Independent Fine Art & Chattel Auctioneers and Valuers. Est 1832

**Auctioneers & Valuers of Fine Art,
Antique Furniture & Collectables**

Fortnightly General Sales of General Furnishings & Effects

Antique Furniture & Fine Art Sales

Total & Part House Clearance Specialists

If you can't find it here you won't find it anywhere!

Buying or Selling, contact us on 01442 826446

The Market Premises, Brook Street, Tring, Herts HP23 5EF

Website: www.tringmarketauctions.co.uk

Email: sales@tringmarketauctions.co.uk

WINDMILL PHARMACY

Come and visit our lovely fresh pharmacy in
Ivinghoe!!

A friendly efficient service with a smile



19-21 HIGH STREET, IVINGHOE, LU7 9EP

TEL: 01296 706 280

OPENING HOURS:

MON – FRI 8.30am – 6pm (CLOSED 1-2pm)

SATURDAY 9am – 12-midday



PITSTONE VILLAGE HEALTH CENTRE

YARDLEY AVENUE, PITSTONE, LEIGHTON BUZZARD, BEDS, LU7 9BE

01525 223211

www.pitstonesurgery.co.uk

DR J R BELL, DR HEATHER WHITE, DR STEPHANIE JOHNSTON, DR KIRSTEN RIEMER,
DR CHARLOTTE FISHER

We welcome patients from Marsworth & Cheddington as well as the 'Ivinghoses' and Pitstone.

We also offer a medication dispensing service to our patients who live in Cheddington and
surrounding villages.

We are a dispensing practice offering a full range of health services at our surgery including Family
planning, Midwifery, Blood tests, Travel and Minor surgery.

Councillor News from Anne Wight



Anne Wight
Bucks County Councillor
Ivinghoe Division

I hope that you all had a very Happy Christmas and would like to take this opportunity to wish Ivinghoe and Ivinghoe Aston residents a joyous and prosperous New Year. I look forward to working with you all and getting to meet more residents personally throughout the course of the coming year as we work together to make Ivinghoe an even more thriving community.

At BCC we had a very busy end to the year. In November, I was very pleased to have been able to provide poppy wreaths from Buckinghamshire County Council for my villages this year in support of the Royal British Legion which were gratefully received by many of our parishes to honour the fallen of Buckinghamshire. After attending the service at St Mary the Virgin church in Ivinghoe on Remembrance Sunday, I made my way down to Pitstone where I was honoured to have been asked to lay the wreath on behalf of Bucks County Council. This was Pitstone's first Remembrance Day service and it was held at Pitstone Memorial Hall. It was very well attended, and a poignant and moving tribute to those who fell in the service of our country.

Also in November at the Full Council meeting, Avril Davies, the former local member for Ivinghoe Division, was made an Honorary Alderman of the Council at Buckinghamshire County Council. She committed her time and energy to serving the community for 16 years as a county councillor and so it is very fitting that her

long service be recognised with this much-deserved honour. I would like to extend my warmest congratulations to her on this great achievement.

In December, as part of Buckinghamshire County Council's efforts to ensure a good Christmas for some of our more vulnerable children and young people, I was very proud to be able to support the annual BCC Christmas appeal. Since part of my work on the Corporate Parenting Panel includes working with some of the younger members of our communities, it was lovely to be able to make their Christmas a bit brighter thanks to our council employees and county councillors who donated Christmas presents throughout December for disadvantaged children across Buckinghamshire. The presents were wrapped and handed over to children and young people by members of the Council's Children's Services teams in time for Christmas. I was delighted to support this effort, and hope that all our young people had a truly memorable Christmas!

As regards my work with Transport for Bucks, one of the advantages of being on the TfB working group is that it has allowed me to develop some very good working

relationships with the TfB team as well as feed back to them residents' suggestions, ideas and priorities. As I know that residents are naturally concerned about road repairs it gives me great pleasure to report that in the past few weeks the jetpatching I commissioned this autumn has been completed throughout Ivinghoe Division just before the colder winter weather comes our way.

The B488 through Horton has now been beautifully resurfaced, which means I am turning my attention to examining various options to slow down traffic. These include re-examining speed limits on parts of the B488, looking at the data from the recent traffic count on the Brownlow Bridge in Ivinghoe, and assisting in the formation of new speed watch volunteer groups in some of our villages which don't yet have them.

Regarding some of my other work at BCC, it is my great privilege to have been appointed as a Trustee to the National Paralympics Heritage Trust as part of my role as Deputy Cabinet Member for Communities and Public Health. The mission of the NPHT is to enlighten and inspire future generations by celebrating, cherishing and bringing the Paralympic heritage and its stories of human endeavour to life.



Over the next 6 years we aim to establish:

- An archive and collection of national and international importance and interest that will be recorded, accessioned, conserved, stored safely and respected globally.
- A website that enables people access to this unique and inspiring resource alongside the ability to share their own stories.
- A Heritage Centre at Stoke Mandeville Stadium, Aylesbury, Buckinghamshire.
- Regional hub exhibitions telling local stories.
- A series of small touring exhibitions supporting sporting and heritage events across Britain.
- A creative learning and participation programme will run across all areas of work.

By way of brief history, Dr Ludwig Guttmann first opened the Stoke Mandeville games as part of his program for the rehabilitation of paraplegics. Wheelchair basketball and particularly archery were popular for building upper body strength and inspiring patients to improve their health. Ultimately these became the first Paralympic games and the NPHT is keen to preserve the history of Dr Guttmann's legacy through ensuring the preservation of archive material and adding patient stories to the collection so that it remains a living legacy.

I was delighted to have had a chance to chat with his daughter, Eva Loeffler, at the NPHT Annual Dinner in London, where we discussed her father's important work and how she has since taken over much of that in recent years. We are all looking forward very much to the Flame Lighting Ceremony in March 2018 at Stoke Mandeville Stadium in advance of the PyeongChang Olympics and Paralympics.

I also found the recent Bucks Brexit Summit very informative and made a

special effort to attend as it was hosted by Bucks County Council and Buckinghamshire Business First. The focus of the summit was to look at the way that Brexit would affect Buckinghamshire and to work with local businesses to help shape the future and explore new export opportunities as Britain prepares to leave the EU.

Buckinghamshire County Council has been proactive in taking a strategic lead in preparing for Brexit, recognising the Council's place shaping role and the potential for the county to thrive in a post-Brexit environment. Buckinghamshire's unique strategic location and entrepreneurial dynamism mean it is perfectly placed to be the national economy's growth engine leading the way in growing productivity and delivery the government's Industrial Strategy.

The Council has taken early action to recognise the local implications of Brexit and is taking steps to mitigate negative impacts and maximise emerging opportunities, setting up a task and finish group which coordinates our Brexit preparations as well as collaborating and sharing best practice with other local authorities and organisations across the country to help support learning and maximise opportunity. The Council is also keen to lobby strongly for Buckinghamshire, to ensure our future relationship with Europe and any potential changes to legislation are as beneficial as possible to local businesses, public sector partners and ultimately, our residents.

As part of these preparations the Council has analysed its internal workforce finding that EEA nationals represent 3%, a lower percentage than ONS estimates of EU workers in the local workforce at 5.6%. As a large commissioning organisation (over

80% of all Council expenditure is delivered by contractors and suppliers) the Council is engaged in ongoing discussions with suppliers to understand and monitor the potential impacts of Brexit, both from a workforce and supply chain perspective.

As a place shaper, Buckinghamshire County Council is taking actions to realise Buckinghamshire's potential and ensure the best possible outcome for Buckinghamshire as a place. Working in partnership with Buckinghamshire Thames Valley Local Enterprise Partnership (BTVLEP) and with Buckinghamshire Business First (BBF), the Council has produced detailed analysis of Buckinghamshire's local economy, including workforce dependencies and trade relationships.

Fortunately, Buckinghamshire is close to major research institutions and well-placed to attract investment in research and innovation facilities to build on existing strengths in motor sport, high performance engineering, space propulsion and drones, agri-food and creative and digital industries. BTVLEP and BBF are currently delivering programmes to accelerate innovation in growth-oriented firms and sectors, in particular, in high performance technology, life sciences and medical technologies, information economy, creative industries, food and drink, and business services.

Buckinghamshire has over 34,000 businesses, ranging from Small and Medium Enterprises (SMEs) to global players in their respective fields.

Ivinghoe business owners and managers, as with other businesses in Bucks, should prepare for Brexit disruptions and opportunities, and although different businesses will have different priorities

and exposures, the points below should be considered by all:

- Prepare to compete in a global market and explore opportunities to expand to new markets
- Prepare for short term disruption
- Map the current supply chain, and consider exposure to short term disruptions and explore alternative suppliers where appropriate
- Consider the impact of WTO tariffs on international trade and explore alternatives if affected
- Join and utilise business networks (including sector-specific) to keep abreast of developments and lobby government effectively

Although government is quite rightly focused on the national and international ramifications of Brexit, it is important to consider local distinctions and how Brexit will affect different parts of the country in different ways. This reality will pose unique challenges and opportunities which will need to be addressed at a local level but for which central government policies will be necessary to enable a successful outcome for each individual local area. These might include:

- Negotiate and agree the future status of EU nationals in the UK and UK nationals in the EU (including future immigration policy)
- Continue investing in infrastructure projects (East-West Rail and additional infrastructure development).
- Commission and enable the publication of migration data at a local authority level and available by sector and occupation
- Review the Shortage Occupation List to ensure it is aligned to the government's

Industrial Strategy and enabling the effective recruitment of talent to fuel economic growth

- Recognise local government's unrivalled knowledge of local communities and key role in place shaping and driving economic growth.

The conclusion of the Brexit summit was that overall Buckinghamshire is well placed to succeed in a post-Brexit world, with one of the country's most productive economies and with its strategic location within the Golden Triangle between Oxford, Cambridge and London, in what has been dubbed the Silicon Valley of the UK. Buckinghamshire is also conveniently located near Heathrow, the UK's gateway to the world which is only likely to become more important following its proposed expansion.

Although Brexit brings some uncertainty and issues to address, it is also a great opportunity for local businesses and partners in Buckinghamshire to take a proactive approach to ensure future success and post-Brexit prosperity in the "Entrepreneurial Heart of Britain". Coinciding with the emergence of disruptive technologies and unprecedented economic change, Brexit provides businesses, public sector organisations and government with the opportunity to evaluate how things are done and become more agile and innovative, ready to harness global opportunities post-Brexit.

Should any Ivinghoe businesses wish to explore further opportunities with Buckinghamshire Business First, do please get in touch!

Anne Wight

Bucks County Councillor, Ivinghoe Division.

From District Councillors Sandra Jenkins and Derek Town

Are you or someone you know at risk of facing eviction or homelessness?

Aylesbury Homeless Action Group (AHAG) are at Aylesbury Library in December 2017 and January 2018 to engage with anyone in need of housing support. More information is available on the AHAG website ahag.org.uk.

Since 2014 Aylesbury Vale District Council has supported the Emergency Winter Provision scheme operated by AHAG, which provides shelter for the homeless and those at risk of eviction during winter months in the district.

New state-of-the-art waste lorries roll out across Aylesbury:

Four new waste lorries are now operating on the streets of Aylesbury. These are the first of 22 new vehicles that will deliver a range of improvements including enhanced performance, better fuel efficiency and safer operation.

Vale Lottery – an update

TVale Lottery was set up by Aylesbury Vale District Council (AVDC) two years ago and was the first of its kind in the country. The following statistics will give a good overview of its success so far. Unlike the National Lottery, Vale Lottery is a much more local affair – with 2800+ tickets bought each week; 180 causes supported; £130,000+ raised for local good causes; £23,000+ cash prizes won so far and a potential £25,000 weekly



jackpot. Vale Lottery helps local causes and charities to generate vital funding and organisations who are signed up include schools, animal charities, theatre groups, sports clubs, disability charities and many more.

Most causes raise anything from a few hundred to a few thousand pounds a year.

What they have to say....

- Every good cause should do this
- It's an easy and fun way to generate vital funds
- Without this we couldn't provide some of our services
- It beats tin rattling

Some examples of where the money is spent:

- Support Groups
- Computers for schools
- Horse riding lessons for autistic children
- Sports equipment
- Therapy sessions
- Running costs

If any local organisation wishes to join Vale Lottery, or indeed if you'd like to sign up and start supporting a local organisation, just visit valelottery.co.uk. If you are involved with a local organisation that is looking for additional funding it is useful to know the following –

1. The lottery licence is held by AVDC.
2. 60% of each £1 ticket cost goes to good causes – 50p is paid directly to the chosen cause and 10p to the Community Fund which supports a range of causes.
3. The rest goes to the prize fund, running costs and VAT.

The most positive element of this scheme is that there is no cost to the participating causes ie license,

management running costs, set up costs etc. The only real labour is the joining effort on line and the promotion of each cause via social media, newsletters (like this publication for example), additionally AVDC will help advise with the promotion of your cause if you choose to take part.

Derek Town – 01296 661637
dtown@aylesburyvaledc.gov.uk

Sandra Jenkins – 01296 668587
sjenkins@aylesburyvaledc.gov.uk

District Councillors for Pitstone and Cheddington Ward

Dear Dog Walkers of the Parish

The walks round here are nice, we think you'll all agree,
And many people comment, on the views being so pretty.
But sometimes on the path you walk, you look and you do see,
A squidgy thing you stepped on, is something that's sh***y.

So we kindly ask you, when Rover needs a poop,
You make a little effort; you simply bend and scoop,
And have a thought for fellow (wo)man, do not commit a sin,
You know you need to pick it up, and put it in the bin!

(The Dog Warden can be contacted on 01296 555605)

the haldi restaurant

**Wednesday Night
is Taster Night!!**

WHY NOT TRY SOMETHING DIFFERENT?



MIXED STARTERS
CHEF'S SELECTION:
LAMB
CHICKEN
KUFTA
MIXED VEGETABLES
RICE
NAAN
COFFEE

£12.95*
per person
*Based on minimum of 2 people

80 Marsworth Road, Pitstone, Buckinghamshire LU7 9AS

Telephone **01296 662204 / 661223**

www.thehaldipitstone.co.uk **www.facebook.com/thehaldirestaurant**

Open 7 days a week including Bank Holidays

Sun-Thurs Noon-2.00pm • 5.30-10.30pm

Fri & Sat Noon-2.00pm • 5.30-11.00pm

Your local Councillors:

Cllr Karen Groom

Areas of Responsibility: Allotments, Beacon Magazine, Beacon Villages Library, Conservation Area, Footpaths and Bridleways, Parish Maintenance, Ivinghoe Aston Village Hall, Lawn Hire, Lawn and Trees, National Trust/Chiltern Soc., Planning
Add: Willowdene Farm, Ivinghoe, LU7 9EA
Tel: **01296 668326** or Mob: **07882 3562411**
Email: **karengroom@hotmail.co.uk**



Cllr Pat Roach

Areas of Responsibility: Health, Community Impact Bucks Liaison, General Parish Maintenance, Lawn and Trees, Local Area Forum
Add: Church View, Church Road, Ivinghoe LU7 9EU
Tel: **01296 668482**
Email: **p.g.roach@hotmail.com**



Cllr Claire Bamber

Areas of Responsibility: Conservation Area, Human Resources (Clerks employment and training), IPC Website and Social Media (inc Facebook and Twitter), Planning Sub-Committee, Police Liaison, Streets, Street Lights and Highways (inc Traffic Calming), Grants and Fundraising
Add: Bruce Grove House, Great Gap, Ivinghoe, LU7 9DZ
Tel: **01296 668134** or Mob: **07711 107 114**
Email: **claire.bamber@btinternet.com**



Mrs Bridget Knight

Clerk to Ivinghoe Parish Council
Add: Parish Office, Ivinghoe Town Hall, High Street, Ivinghoe, Bucks LU7 9EP
Tel: **07960 605393**
Email: **ivinghoe parishclerk@gmail.com**



Cllr Anne Wight

Bucks County Councillor
Ivinghoe Division
Add: 31 Redwood Drive, Wing, LU7 0TA
Tel: **01296 682955**
Email: **awight@buckscc.gov.uk**



Cllr Andrew Dicker

Areas of Responsibility: Allotments, Finance
Add: The Old House, 38 Station Road, Ivinghoe, LU7 9EB.
Tel: **01296 668444**
Email: **andrew.dicker31@gmail.com**



Cllr Stephen Lott

Areas of Responsibility: Beacon Villages Library, Footpaths and Bridleways, Ivinghoe Aston Village Hall, Lawn Hire, Local Area Forum, Playgrounds (Ivinghoe and Ivinghoe Aston), Police Liaison, Town Hall Committee
Add: 2 Yew Tree Close, Ivinghoe, LU7 9ET.
Tel: **01296 668897**
Email: **sjl@linley-lott.me**



Cllr Anna Stone

Areas of Responsibility: Education, Footpaths and Bridleways, Town Hall Committee, Grants and Fundraising
Add: Willowdene Farm, Ivinghoe, LU7 9EA
Tel: **01296 668326**
Email: **annastone92@hotmail.co.uk**



Cllr Chris Poll

District Cllr Edlesborough Ward
Add: 43 Gooseacre, Cheddington LU7 0SR
Tel: **01296 663 737**
Email: **cpoll@aylesburyvaledc.gov.uk**



Cllr Sheena Bexson

Areas of Responsibility: Community Impact Bucks Liaison, Planning sub-committee, Play Areas (Ivinghoe Aston & Ivinghoe), Streets, Street Lights and Highways (inc Traffic Calming).
Email: **SBexson@automotive-property.com**



Cllr Derek J Town

Tel: **01296 661637**
Email: **dvtown@aylesburyvaledc.gov.uk**





Save this date!

By popular demand,

Ivinghoe Flower and Produce Show

is back with its newest Committee
sending all who wish to contribute
their own entries,
a very warm welcome to do so
on

Sat 8th September 2018 in the Hub.

The **Show Schedule**

with all details
of entering our
Flower, Vegetable and Cookery
challenges,
classes and rules of entry will be
published widely by May '12